

# Detection and Segmentation

(출처: [cs231n.stanford.edu](https://cs231n.stanford.edu))

# Computer Vision Tasks

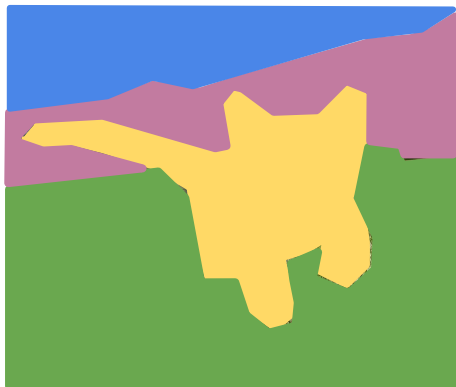
## Classification



**CAT**

No spatial extent

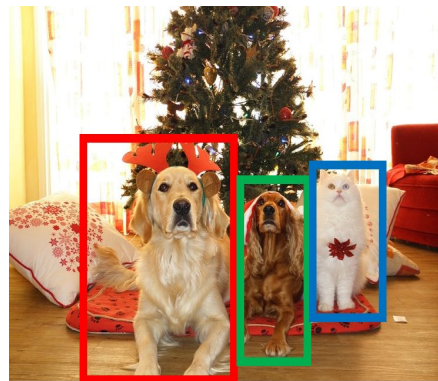
## Semantic Segmentation



**GRASS, CAT, TREE, SKY**

No objects, just pixels

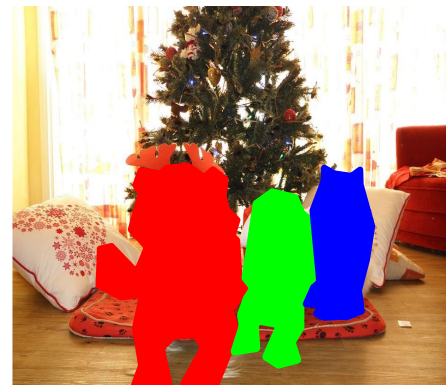
## Object Detection



**DOG, DOG, CAT**

Multiple Object

## Instance Segmentation



**DOG, DOG, CAT**

[This image is CC0 public domain](#)

# Object Detection

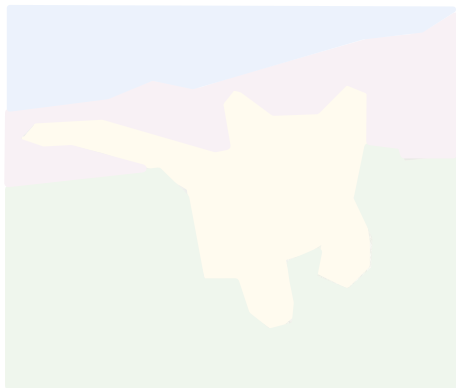
## Classification



CAT

No spatial extent

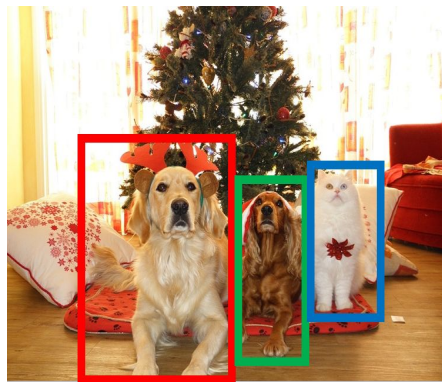
## Semantic Segmentation



GRASS, CAT,  
TREE, SKY

No objects, just pixels

## Object Detection



DOG, DOG, CAT

Multiple Object

## Instance Segmentation



DOG, DOG, CAT

# Object Detection: Impact of Deep Learning

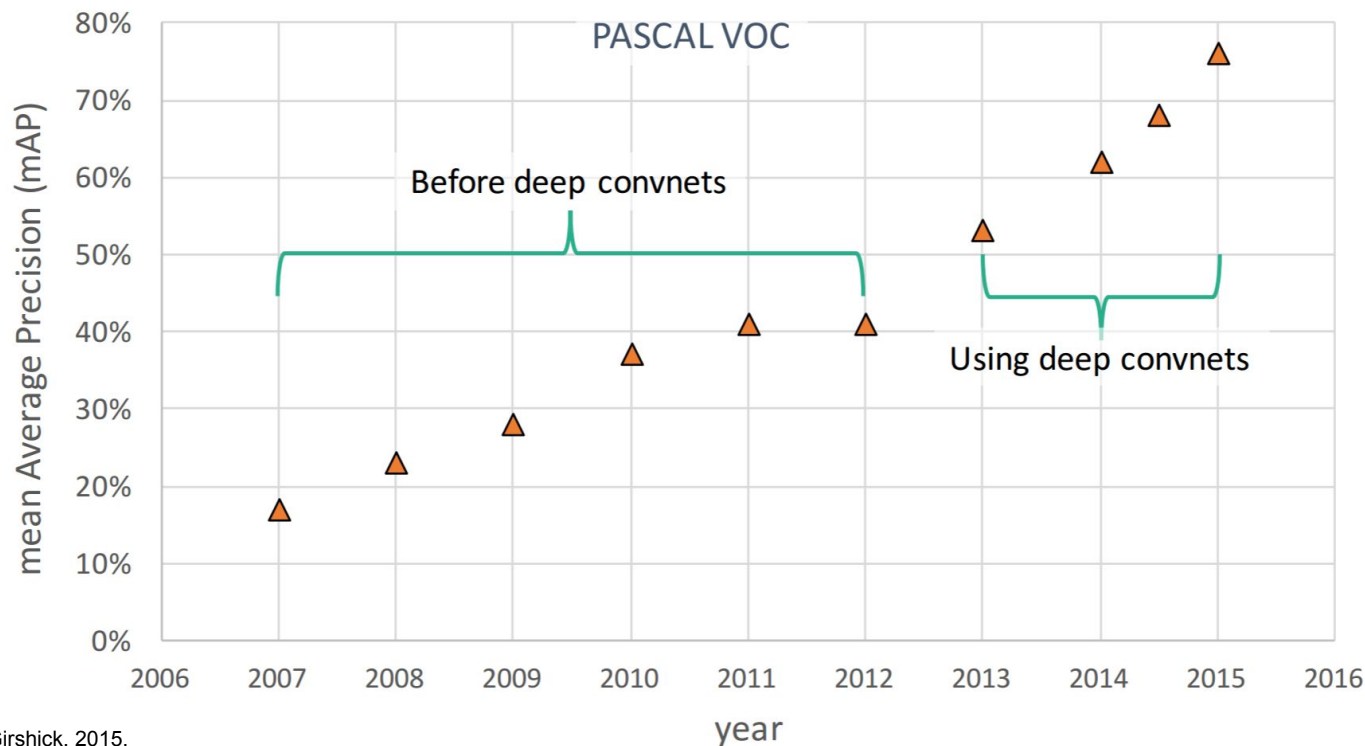


Figure copyright Ross Girshick, 2015.  
Reproduced with permission.

# Some Popular Classification Metrics...

Accuracy

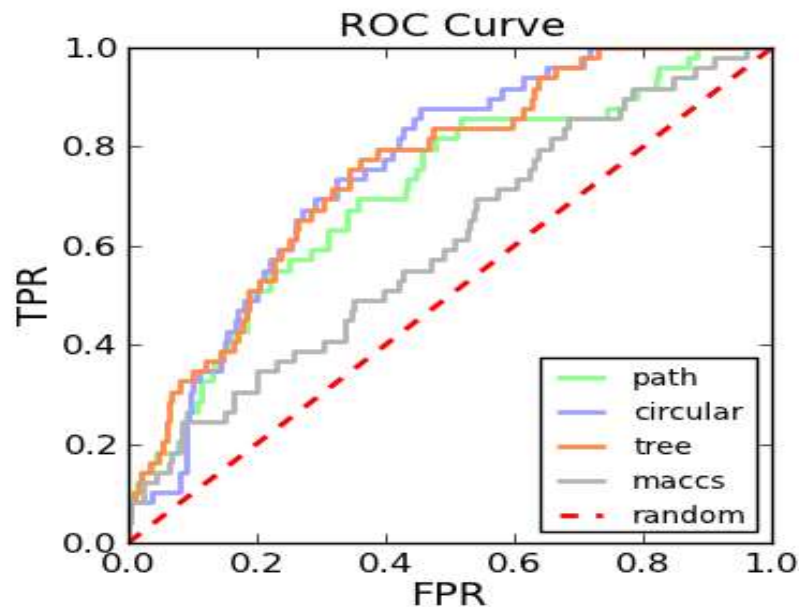
Confusion Matrix

Log-Loss

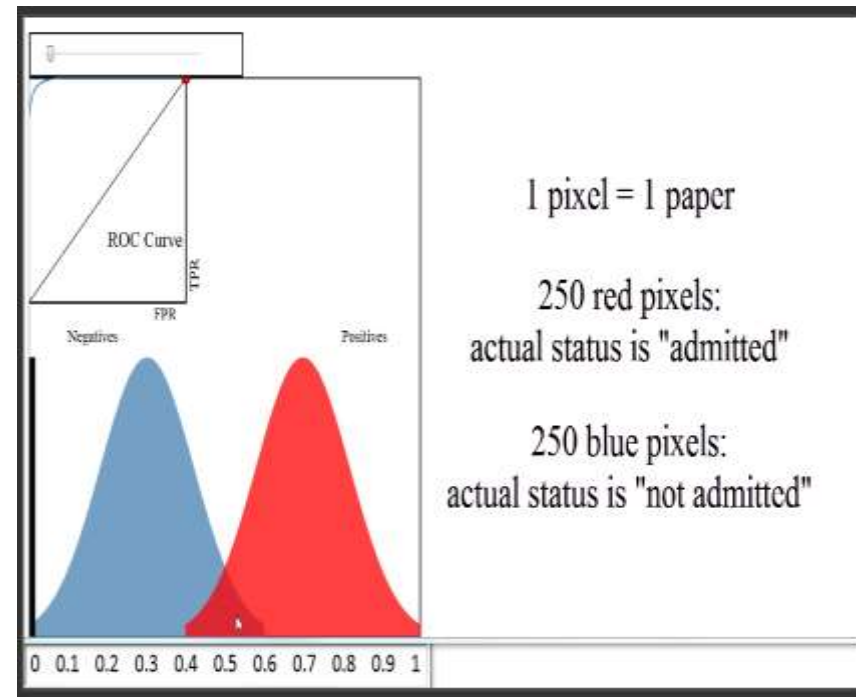
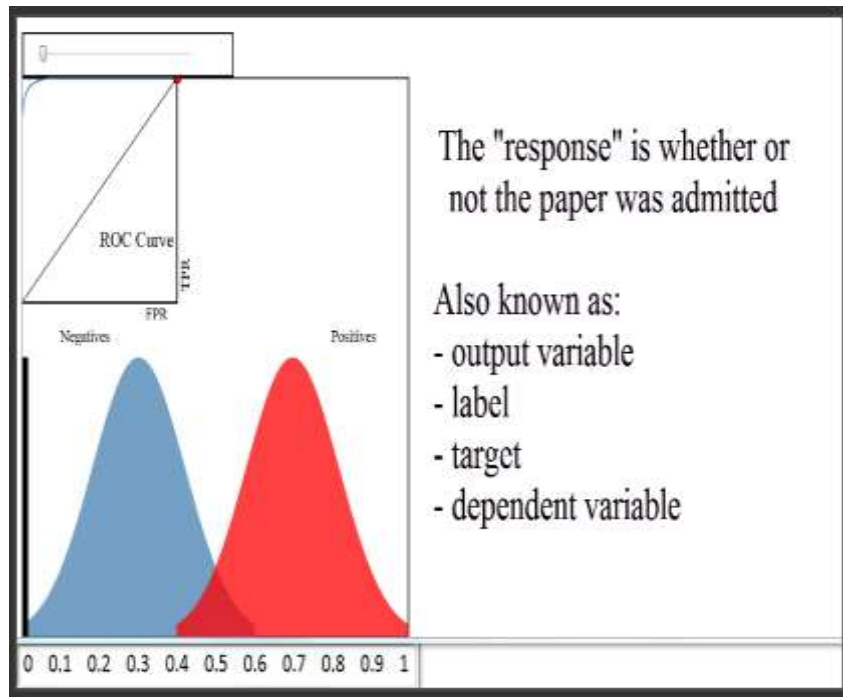
AUC

# AUC (Area Under Curve)

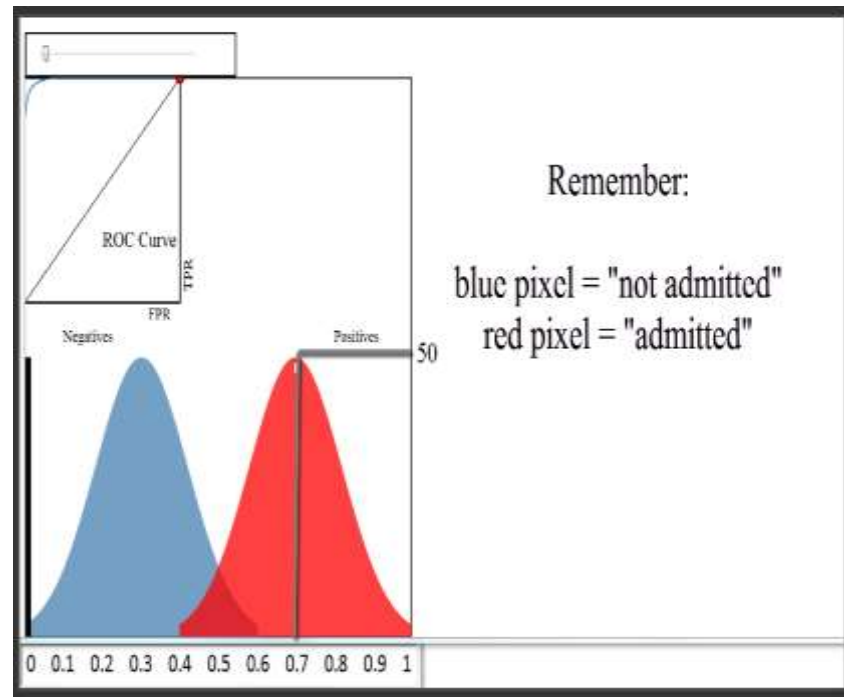
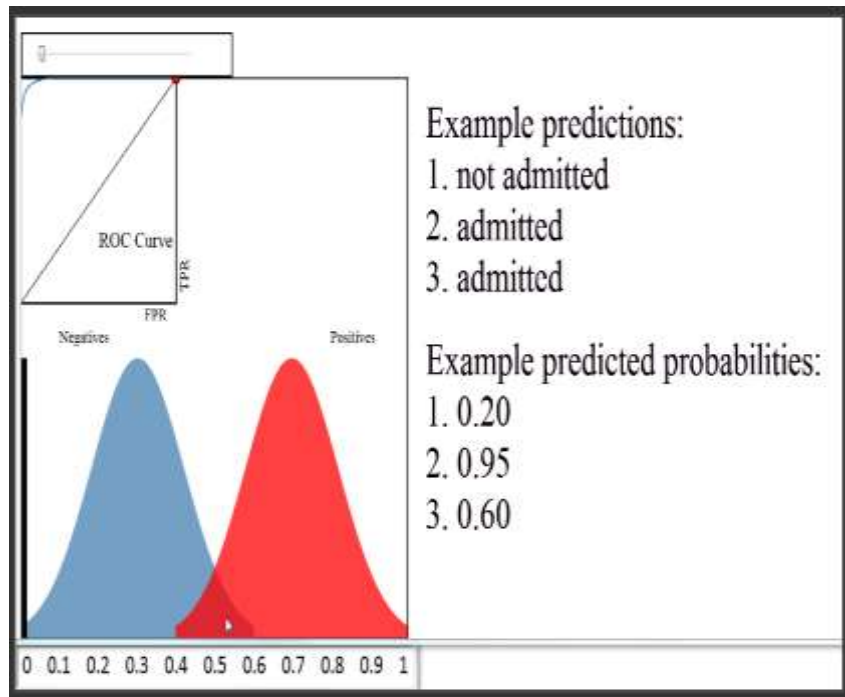
- The curve is receiver operating characteristic curve or in short ROC curve
- Provides nuanced details about the behavior of the classifier
- Bad ROC curve covers very little area
- Good ROC curve has a lot of space under it
- But, how?



# AUC (contd..)

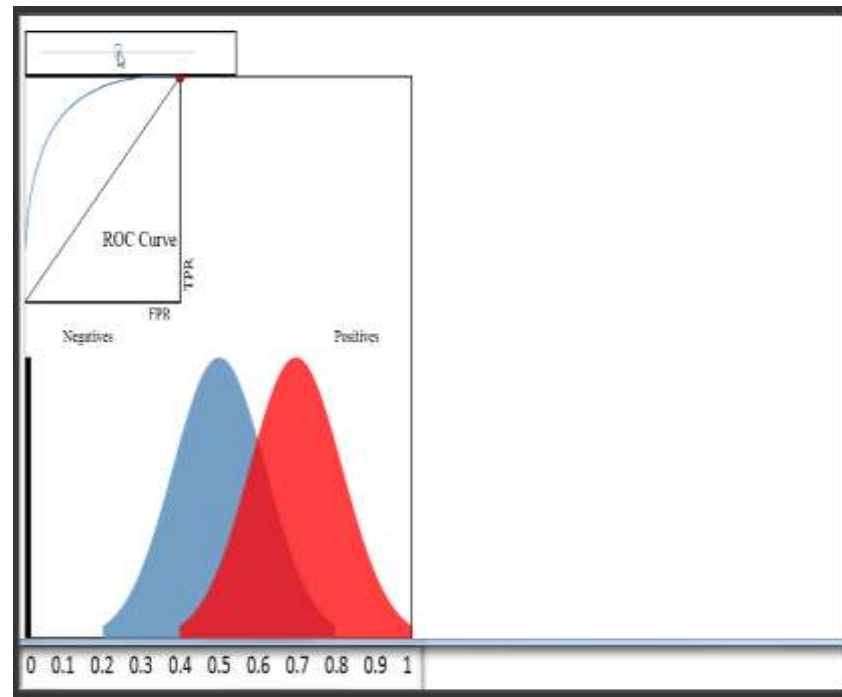
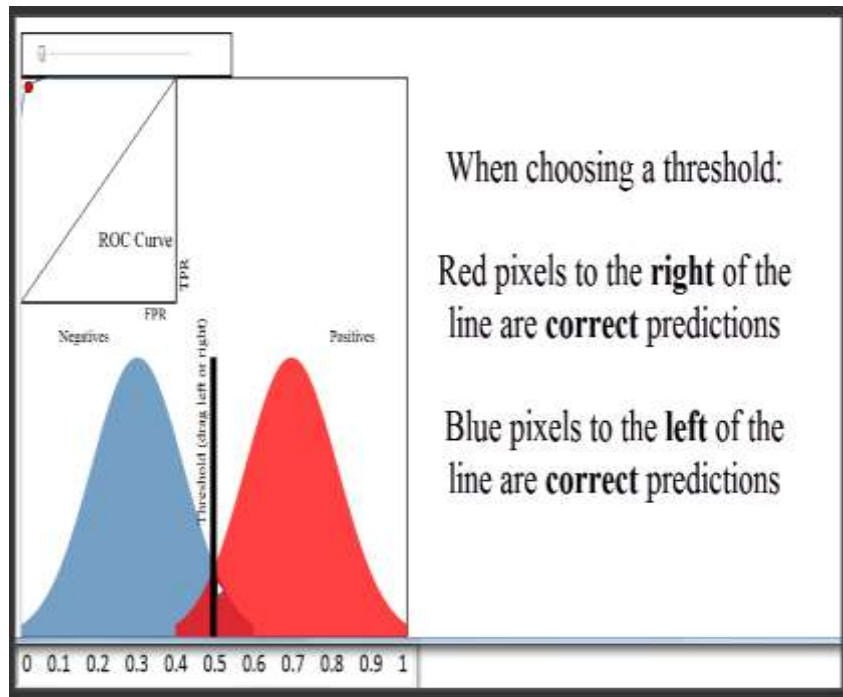


# AUC (contd..)

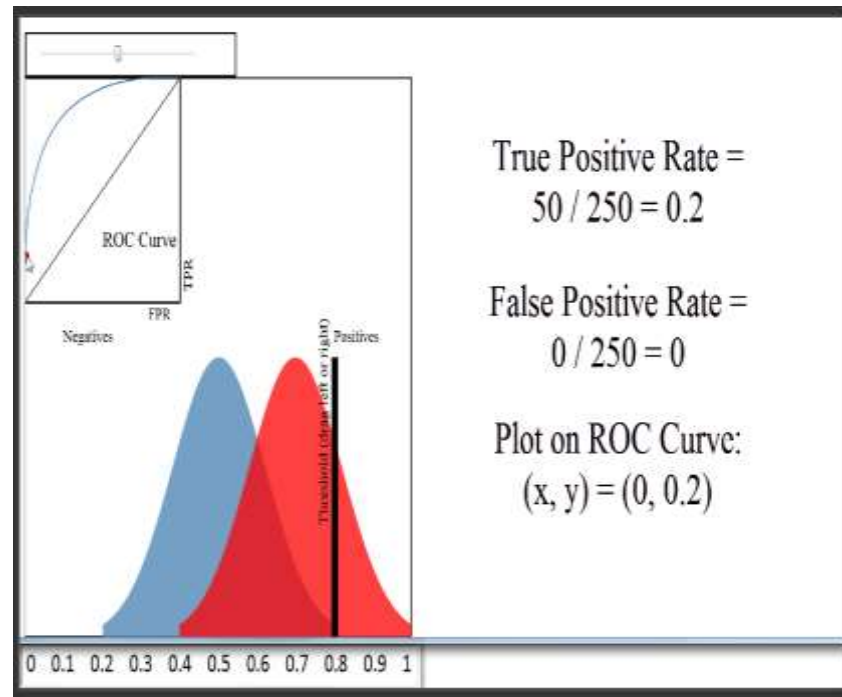
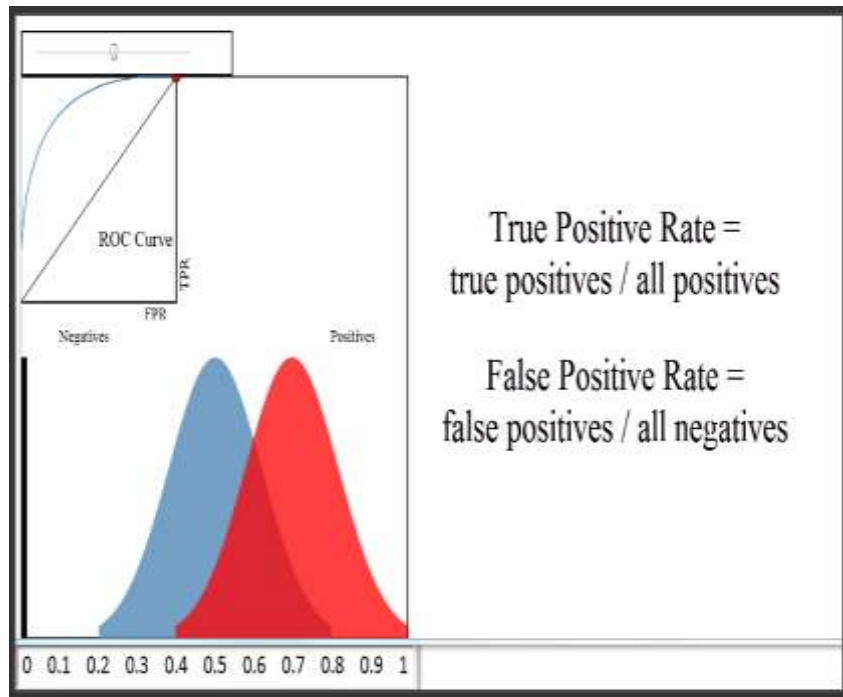




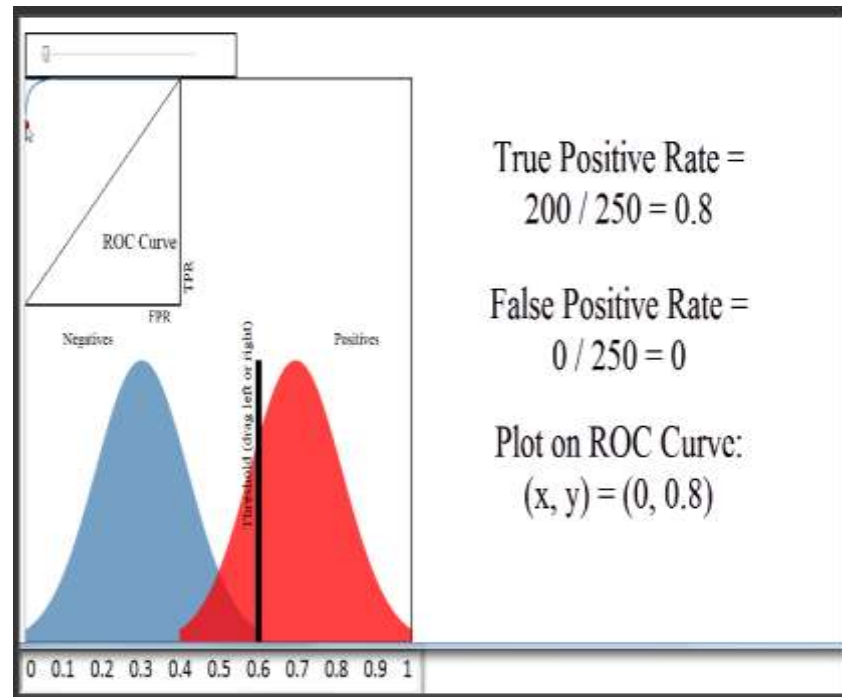
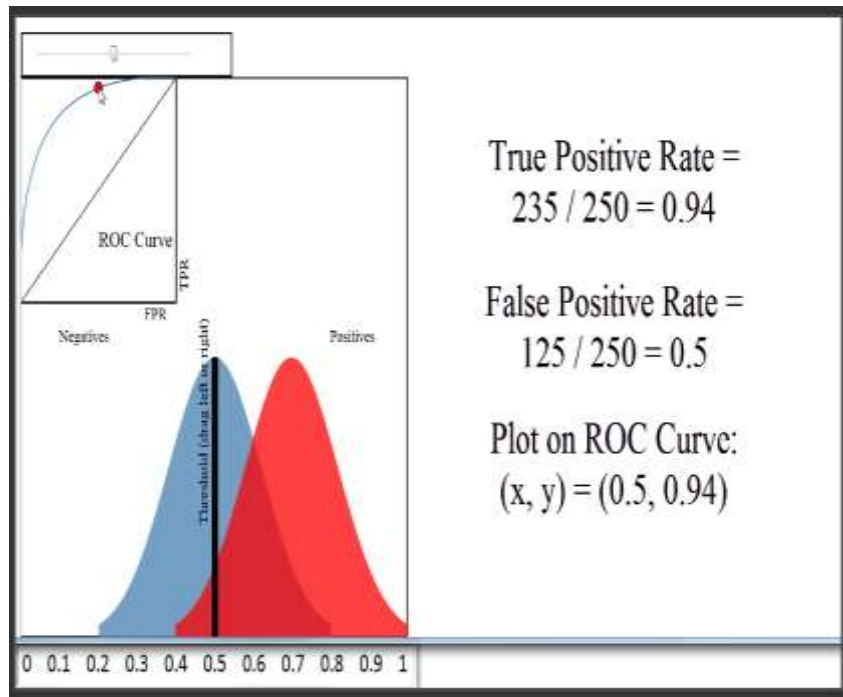
# AUC (contd..)



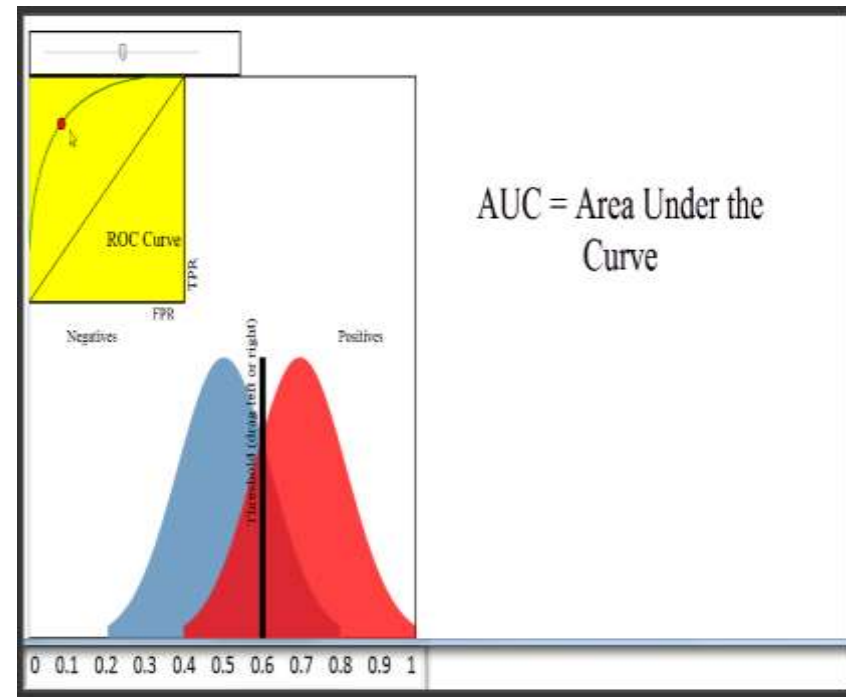
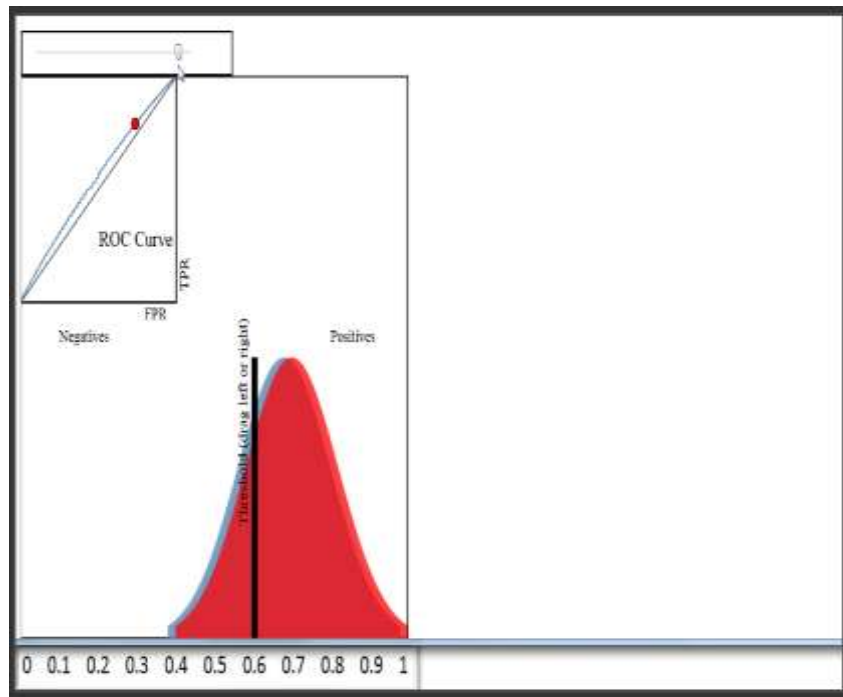
# AUC (contd..)



# AUC (contd..)



# AUC (contd..)



## AUC (contd..)

- So, what's the advantage of using of ROC curve over a simpler metric?

**ROC curve visualizes all possible classification thresholds, whereas other metrics only represents your error rate for a single threshold**

# Precision - Recall

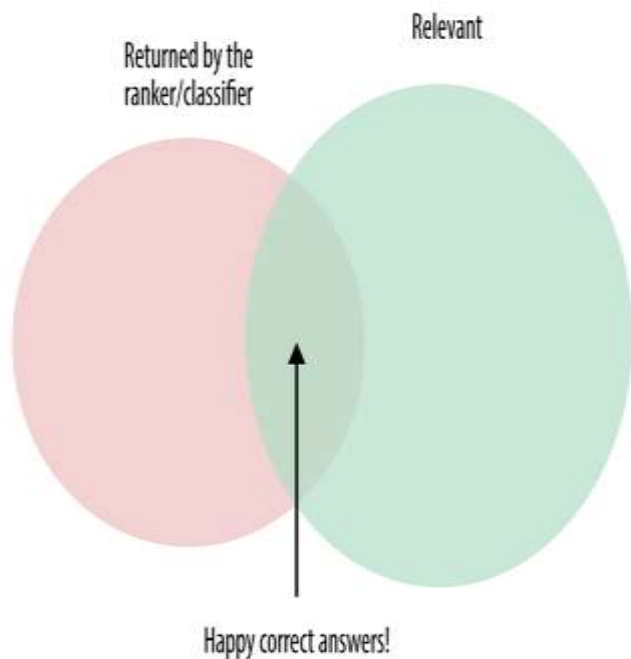
Considering the scenario of web search result, Precision answers this question:

*“Out of the items that the ranker/classifier predicted to be relevant, how many are truly relevant?”*

Whereas, Recall answers this:

*“Out of all the items that are truly relevant, how many are found by the ranker/classifier?”*

# Precision - Recall (Contd..)



$$\text{precision} = \frac{\# \text{ happy correct answers}}{\# \text{ total items returned by ranker}}$$

...

$$\text{recall} = \frac{\# \text{ happy correct answers}}{\# \text{ total relevant items}}$$

# Calculation Example Of Precision- Recall

	Predicted as Negative	Predicted as Positive
Actual Negative	9760 (TN)	140 (FP)
Actual Positive	40 (FN)	60 (TP)

Total Negative =  $9760 + 140 = 9900$

Total Positive =  $40 + 60 = 100$                       Total

Negative prediction =  $9760 + 40 = 9800$  Total

Positive prediction =  $140 + 60 = 200$

Precision =  $TP / (TP+FP)$

$$= 60 / (60 + 140) = 30\%$$

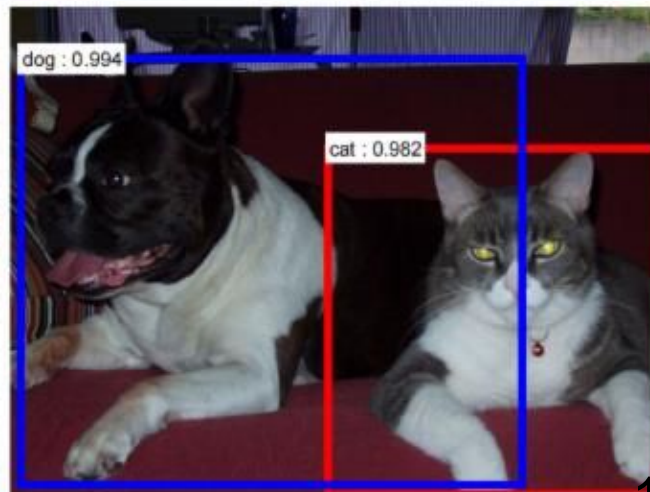
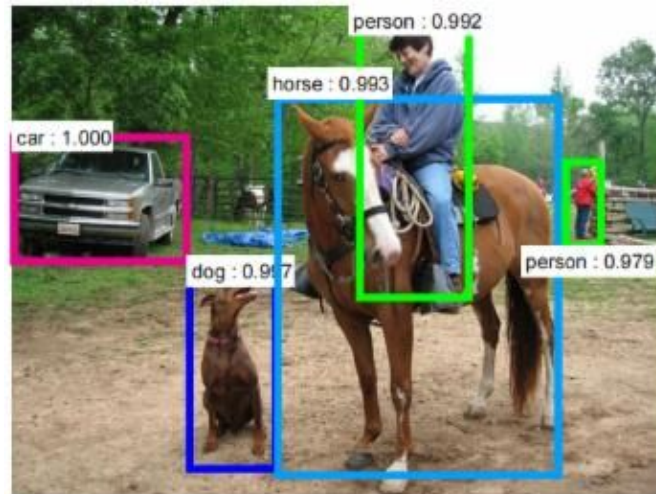
Recall =  $TP / (TP+FN)$

$$= 60 / (60+40) = 60\%$$



# Object Detection

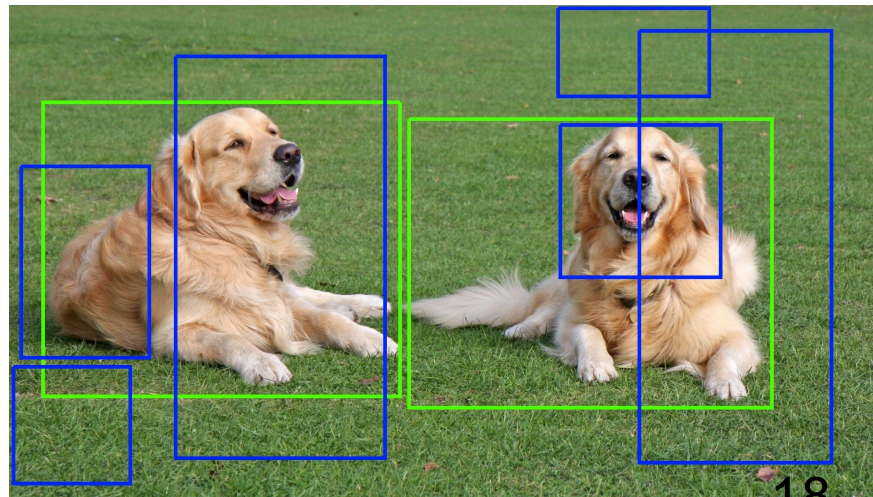
- Input: Image
- Output: For each object class  $c$  and each image  $i$ , an algorithm returns predicted detections:  $\{(b_{ij}, s_{ij})\}_{j=1}^M$  locations  $b_{ij}$ th confidence scores  $s_{ij}$



# Object Detection: Evaluation

- True positive: correct class prediction **AND** IoU > 50%.
- False positive: wrong class or IoU < 50%.
- False negative: missed (not detected) object
- Only one detection can be matched to an object.

- $$z_{ij} = \begin{cases} 1 & b_{ij} \text{ is a True Positive} \\ 0 & b_{ij} \text{ is a False Positive} \end{cases}$$



# Object Detection: Evaluation

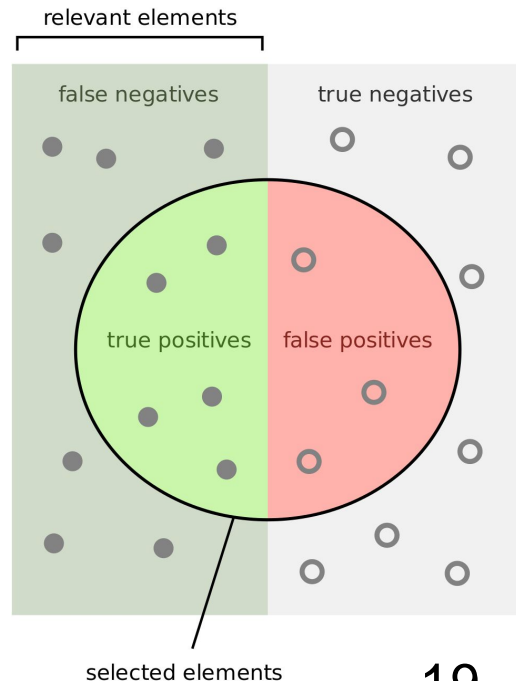
- Mean Average Precision (mAP) across all classes, based on Average Precision (AP) per class, based on **Precision** and **Recall**.

How many selected items are relevant?

$$\text{Precision} = \frac{\text{green semi-circle}}{\text{green and red semi-circles}}$$

How many relevant items are selected?

$$\text{Recall} = \frac{\text{green semi-circle}}{\text{green semi-circle and green rectangle}}$$

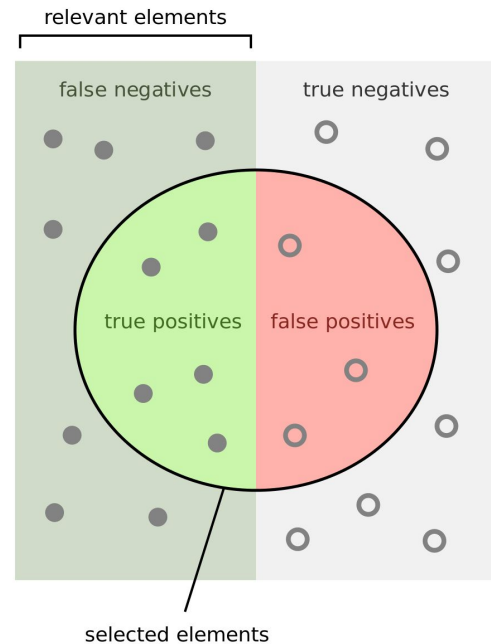


# Precision And Recall For a Threshold

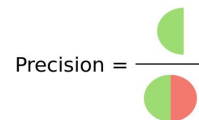
$$Recall(t) = \frac{\sum_{ij} 1[s_{ij} \geq t] z_{ij}}{N}$$

$$Precision(t) = \frac{\sum_{ij} 1[s_{ij} \geq t] z_{ij}}{\sum_{ij} 1[s_{ij} \geq t]}$$

$$z_{ij} = \begin{cases} 1 & b_{ij} \text{ is a True Positive} \\ 0 & b_{ij} \text{ is a False Positive} \end{cases}$$

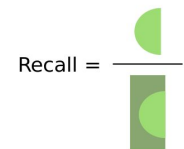


How many selected items are relevant?



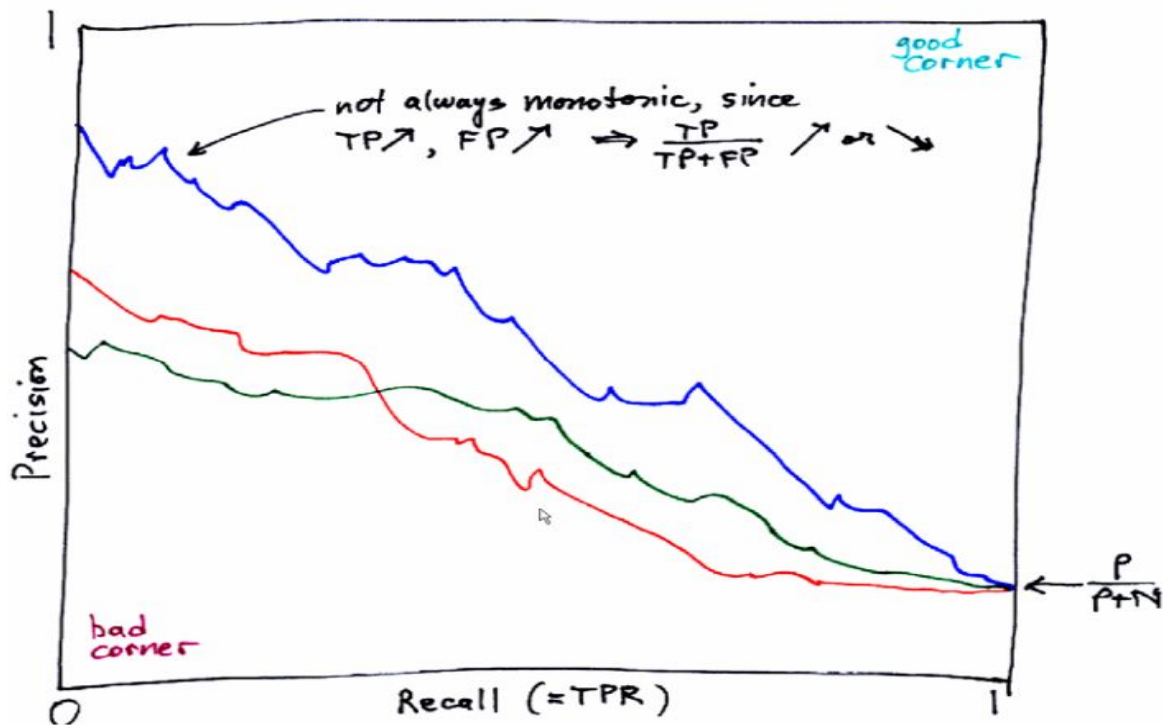
Precision =

How many relevant items are selected?



Recall =

# Precision-Recall Curve



# Average Precision (AP)

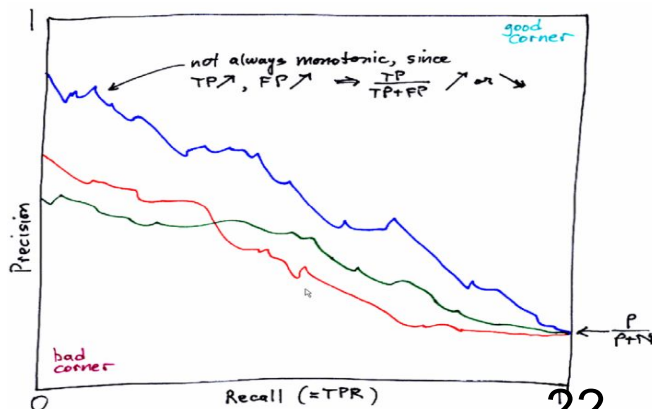
- [In the vision community] AP is the estimated area under the PR curve

$$\text{Average Precision} = \frac{\sum_{r \in \text{Recall}([0,1])} \text{Precision}(t_r)}{|\text{Recall}([0,1])|}$$

For example:

$$\text{Recall}([0,1]) = \{0, 0.1, 0.2, \dots, 0.9, 1.0\}$$

$$|\text{Recall}([0,1])| = 11$$



# Computing Precision-Recall Point

n	doc #	relevant
1	588	x
2	589	x
3	576	
4	590	x
5	986	
6	592	x
7	984	
8	988	
9	578	
10	985	
11	103	
12	591	
13	772	x
14	990	

Let total # of relevant docs = 6  
Check each new recall point:

$R=1/6=0.167$ ;  $P=1/1=1$

$R=2/6=0.333$ ;  $P=2/2=1$

$R=3/6=0.5$ ;  $P=3/4=0.75$

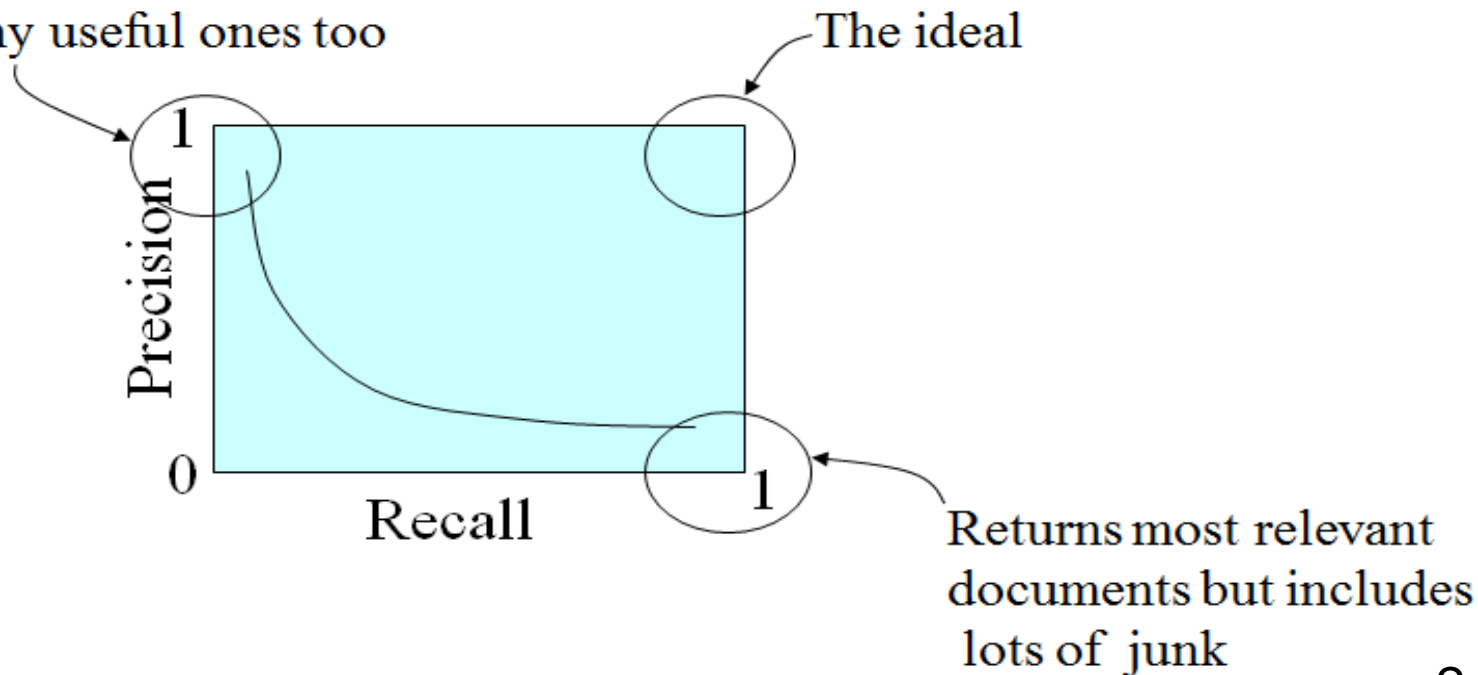
$R=4/6=0.667$ ;  $P=4/6=0.667$

$R=5/6=0.833$ ;  $p=5/13=0.38$

Missing one  
relevant document.  
Never reach  
100% recall

# Trade-off between Recall and Precision

Returns relevant documents but misses many useful ones too





# Mean Average Precision (mAP)

- The winner of each object class is the team with the highest average precision
- The winner of the challenge is the team with the highest mean Average Precision (mAP) across all classes.

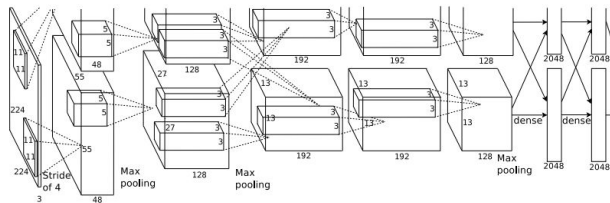
$$\text{meanAveragePrecision} = \frac{\sum_{c \in C} \text{AveragePrecision}_c}{|C|}$$

# Object Detection: Single Object

(Classification + Localization)



[This image](#) is [CC0 public domain](#)



**Fully  
Connected:**  
4096 to 1000

## Class Scores

Cat: 0.9  
Dog: 0.05  
Car: 0.01  
...

**Vector:**  
4096

**Fully  
Connected:**  
4096 to 4

**Box  
Coordinates**  
(x, y, w, h)

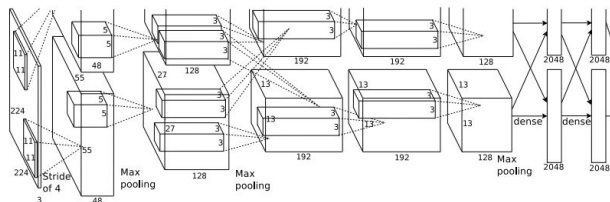
Treat localization as a  
regression problem!

# Object Detection: Single Object

(Classification + Localization)



[This image](#) is [CC0 public domain](#)



**Fully Connected:**  
4096 to 1000

## Class Scores

Cat: 0.9  
Dog: 0.05  
Car: 0.01  
...

**Correct label:**  
Cat

**Softmax Loss**

**Vector:**  
4096

**Fully Connected:**  
4096 to 4

**Box Coordinates**  
(x, y, w, h)

**L2 Loss**

**Correct box:**  
(x', y', w', h')

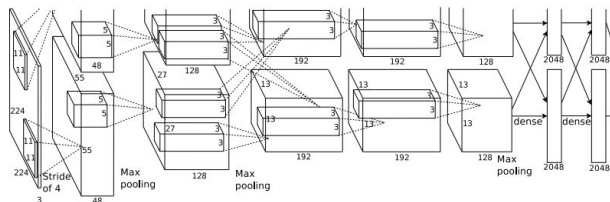
Treat localization as a regression problem!

# Object Detection: Single Object

(Classification + Localization)



[This image is CC0 public domain](#)



Fully  
Connected:  
4096 to 1000

## Class Scores

Cat: 0.9  
Dog: 0.05  
Car: 0.01  
...

Correct label:  
Cat

Softmax  
Loss

Multitask Loss

Vector:  
4096

Fully  
Connected:  
4096 to 4

Box  
Coordinates  
(x, y, w, h)

L2 Loss

Correct box:  
(x', y', w', h')

Treat localization as a  
regression problem!

+

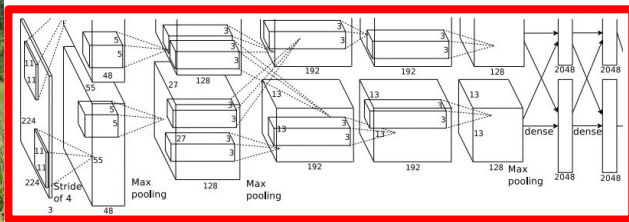
Loss

# Object Detection: Single Object

(Classification + Localization)



[This image is CC0 public domain](#)



Often pretrained on ImageNet  
(Transfer learning)

**Vector:**  
4096

**Fully  
Connected:**  
4096 to 1000

## Class Scores

Cat: 0.9  
Dog: 0.05  
Car: 0.01  
...

**Correct label:**  
Cat

**Softmax  
Loss**

**+** → **Loss**

**Fully  
Connected:**  
4096 to 4

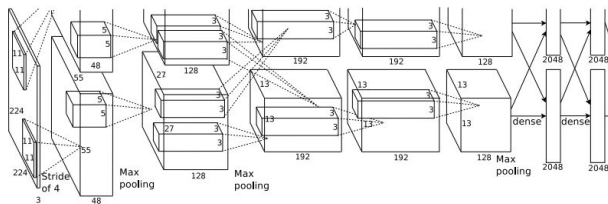
**Box  
Coordinates**  
(x, y, w, h)

**L2 Loss**

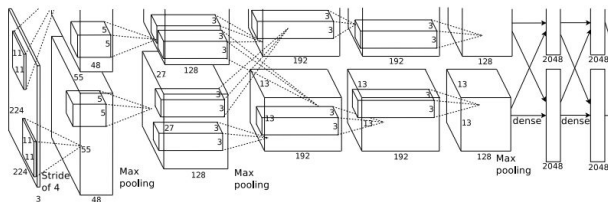
**Correct box:**  
(x', y', w', h')

Treat localization as a  
regression problem!

# Object Detection: Multiple Objects



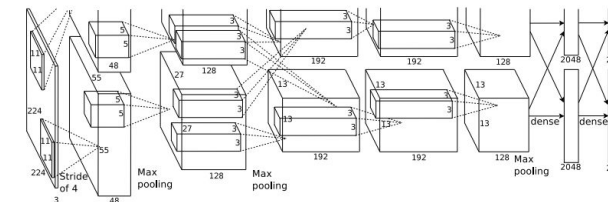
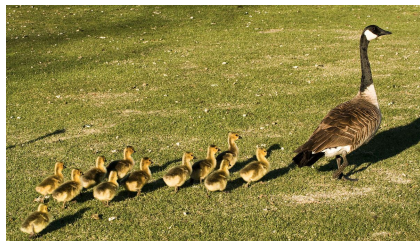
CAT: (x, y, w, h)



DOG: (x, y, w, h)

DOG: (x, y, w, h)

CAT: (x, y, w, h)



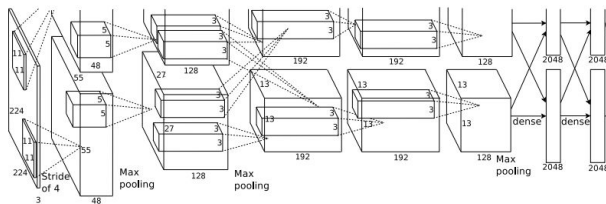
DUCK: (x, y, w, h)

DUCK: (x, y, w, h)

....

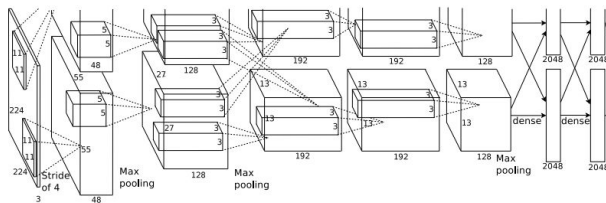
# Object Detection: Multiple Objects

Each image needs a different number of outputs!



CAT: (x, y, w, h)

## 4 numbers

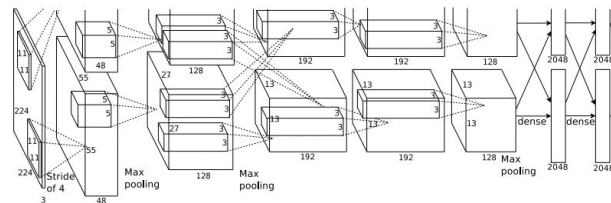
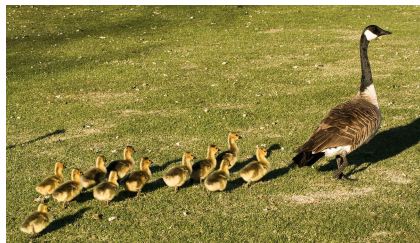


DOG: (x, y, w, h)

DOG: (x, y, w, h)

# 16 numbers

CAT: (x, y, w, h)



DUCK: (x, y, w, h)

# Many

DUCK: (x, y, w, h)

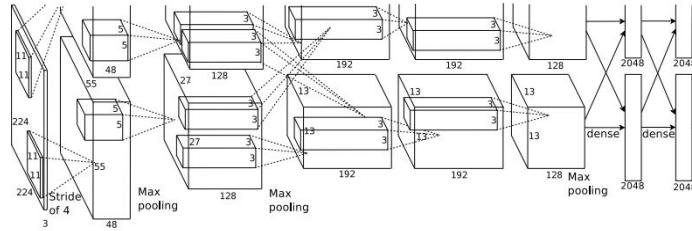
numbers!

■ ■ ■ ■



# Object Detection: Multiple Objects

Apply a CNN to many different crops of the image, CNN classifies each crop as object or background

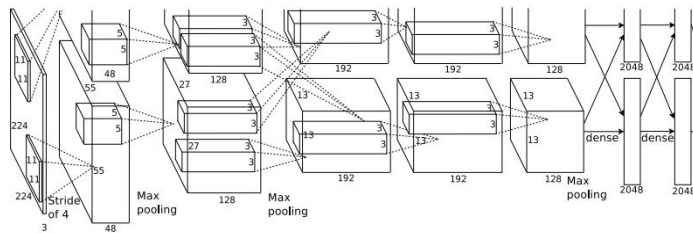


Dog? NO  
Cat? NO  
Background? YES



# Object Detection: Multiple Objects

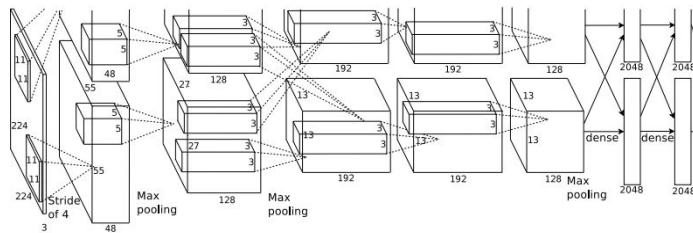
Apply a CNN to many different crops of the image, CNN classifies each crop as object or background



Dog? YES  
Cat? NO  
Background? NO

# Object Detection: Multiple Objects

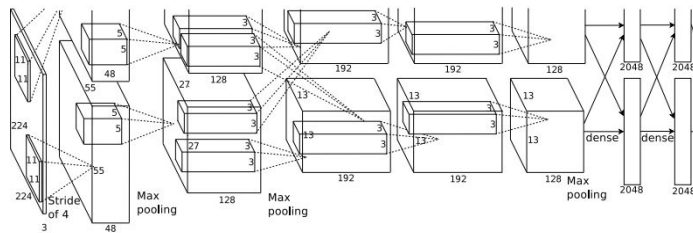
Apply a CNN to many different crops of the image, CNN classifies each crop as object or background



Dog? YES  
Cat? NO  
Background? NO

# Object Detection: Multiple Objects

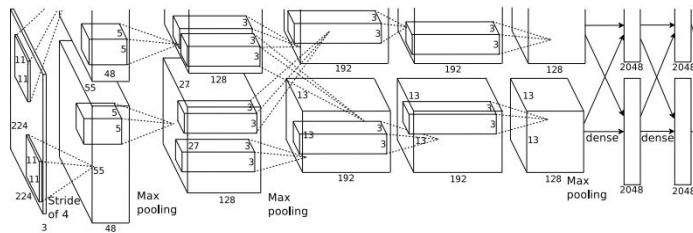
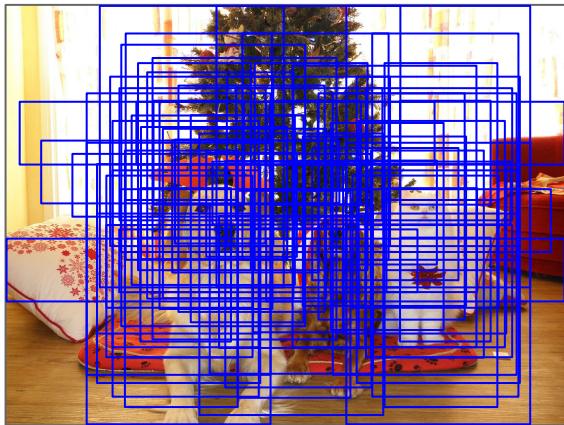
Apply a CNN to many different crops of the image, CNN classifies each crop as object or background



Dog? NO  
Cat? YES  
Background? NO

# Object Detection: Multiple Objects

Apply a CNN to many different crops of the image, CNN classifies each crop as object or background

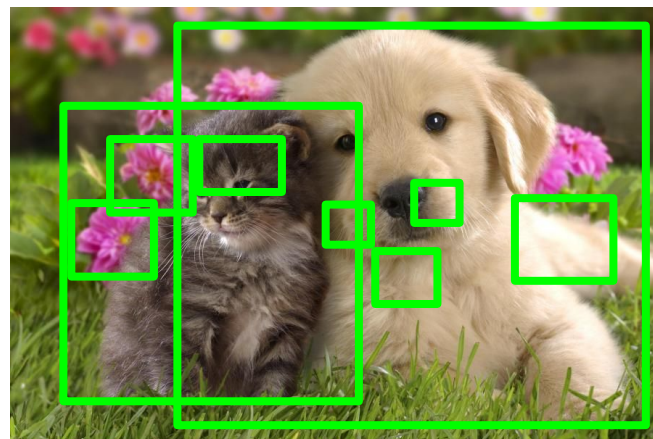


Dog? NO  
Cat? YES  
Background? NO

Problem: Need to apply CNN to huge number of locations, scales, and aspect ratios, very computationally expensive!

# Region Proposals: Selective Search

- Find “blobby” image regions that are likely to contain objects
- Relatively fast to run; e.g. Selective Search gives 2000 region proposals in a few seconds on CPU



Alexe et al, “Measuring the objectness of image windows”, TPAMI 2012  
Uijlings et al, “Selective Search for Object Recognition”, IJCV 2013  
Cheng et al, “BING: Binarized normed gradients for objectness estimation at 300fps”, CVPR 2014  
Zitnick and Dollar, “Edge boxes: Locating object proposals from edges”, ECCV 2014

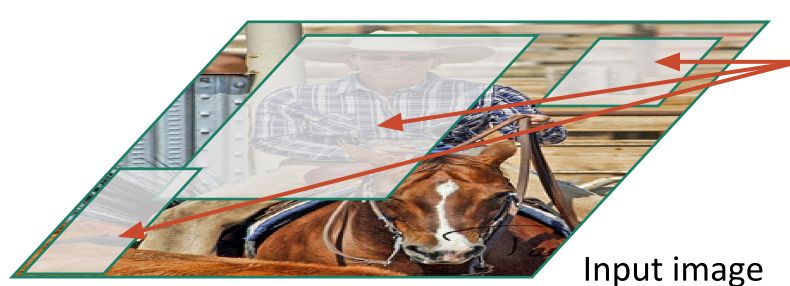
# R-CNN



Input image

Girshick et al, "Rich feature hierarchies for accurate object detection and semantic segmentation", CVPR 2014.  
Figure copyright Ross Girshick, 2015; [source](#). Reproduced with permission.

# R-CNN



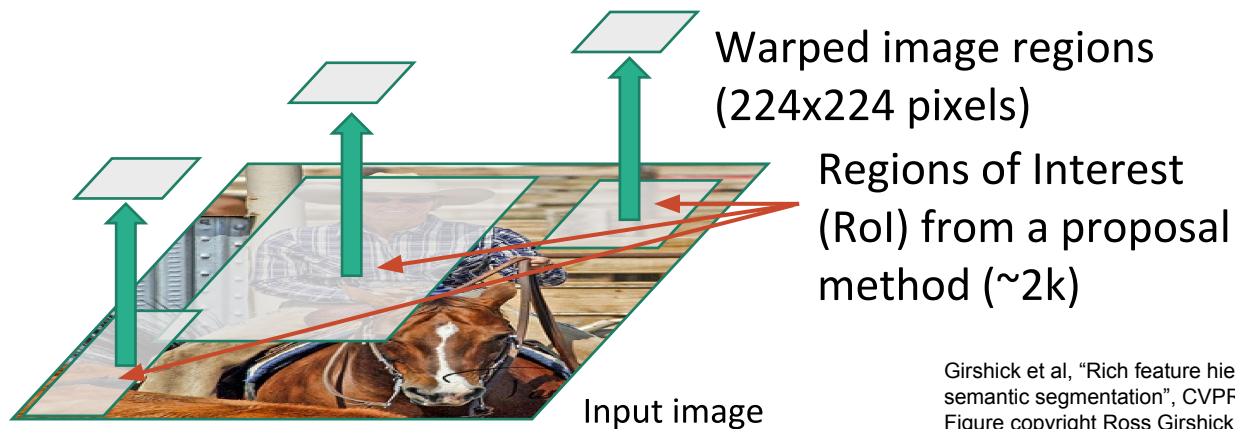
Input image

Regions of Interest  
(RoI) from a proposal  
method ( $\sim 2k$ )

Girshick et al, "Rich feature hierarchies for accurate object detection and semantic segmentation", CVPR 2014.  
Figure copyright Ross Girshick, 2015; [source](#). Reproduced with permission.



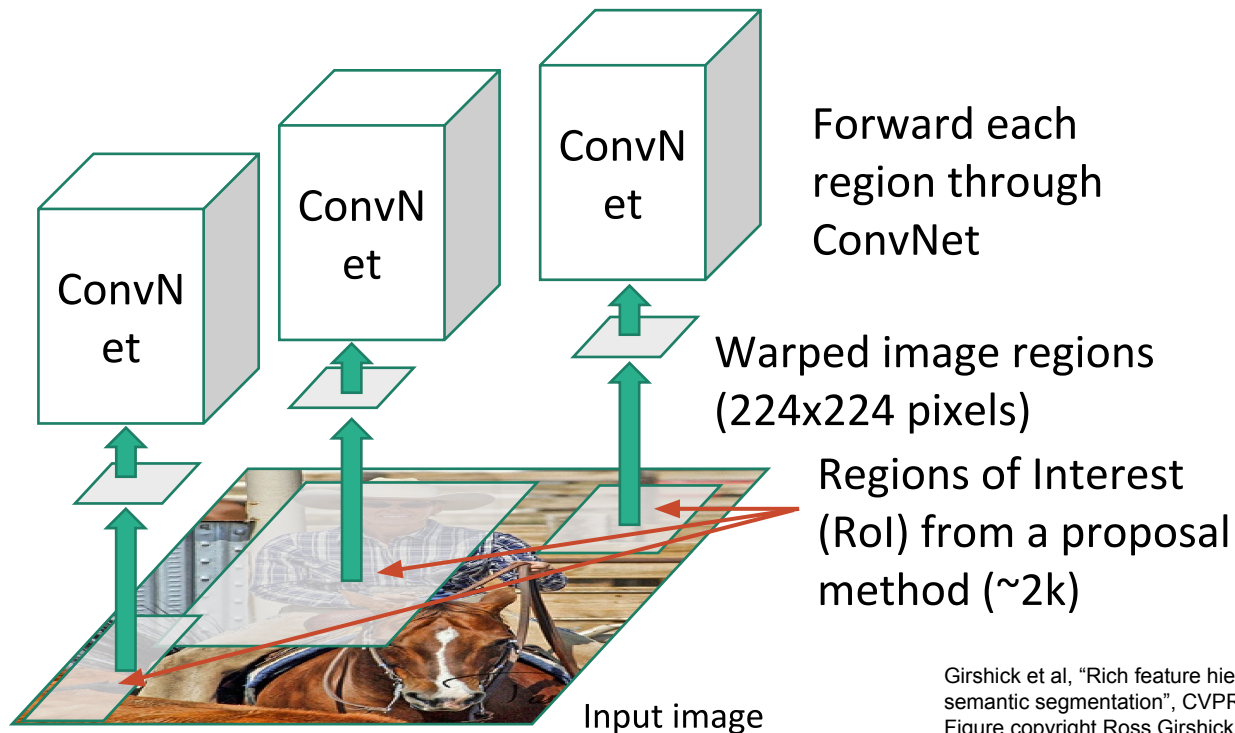
# R-CNN



Girshick et al, "Rich feature hierarchies for accurate object detection and semantic segmentation", CVPR 2014.  
Figure copyright Ross Girshick, 2015; [source](#). Reproduced with permission.

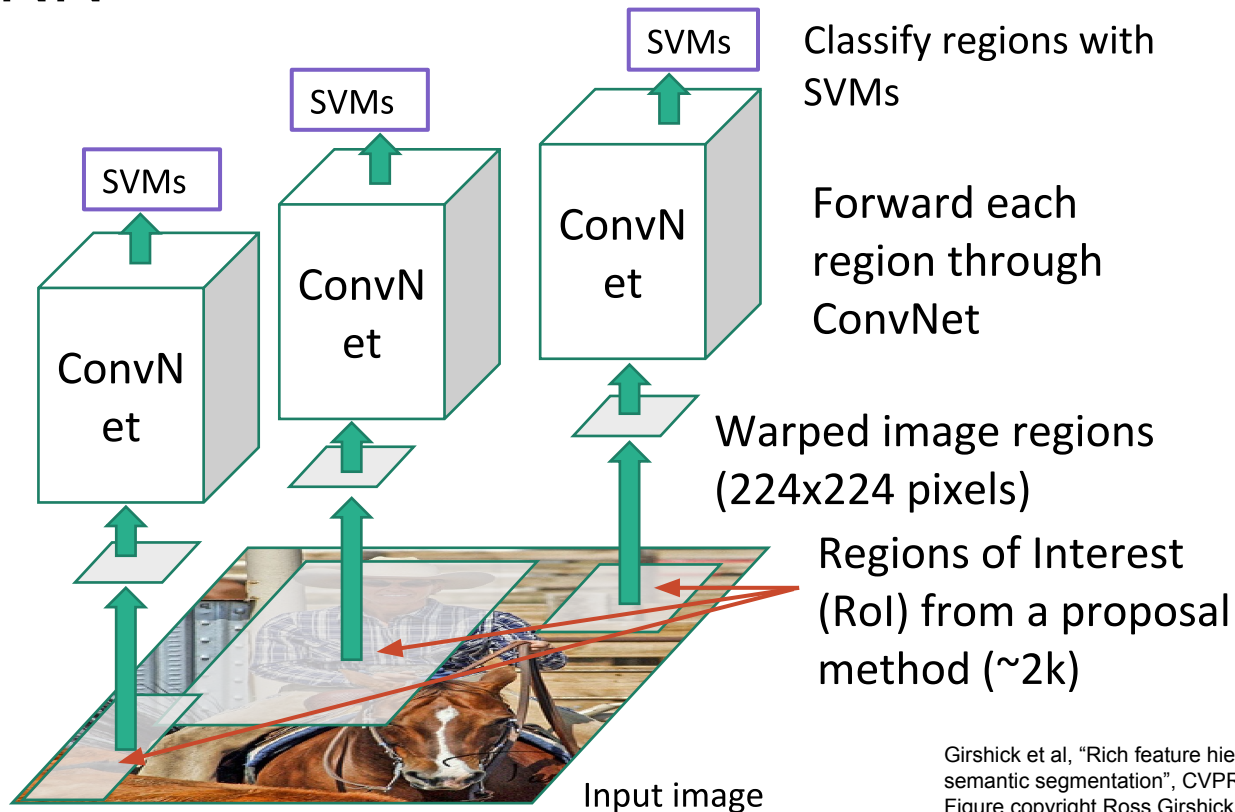


# R-CNN



Girshick et al, "Rich feature hierarchies for accurate object detection and semantic segmentation", CVPR 2014.  
Figure copyright Ross Girshick, 2015; [source](#). Reproduced with permission.

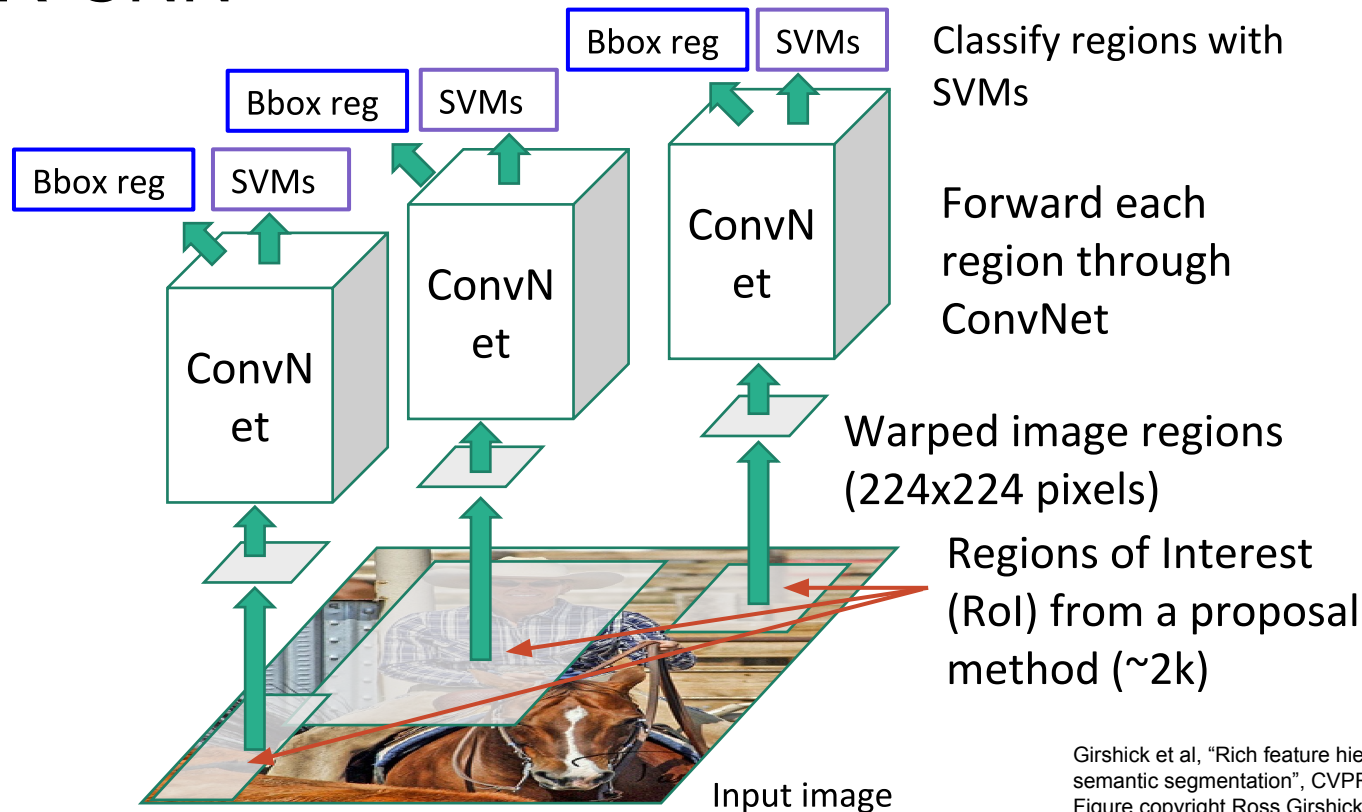
# R-CNN



Girshick et al, "Rich feature hierarchies for accurate object detection and semantic segmentation", CVPR 2014.  
Figure copyright Ross Girshick, 2015; [source](#). Reproduced with permission.

# R-CNN

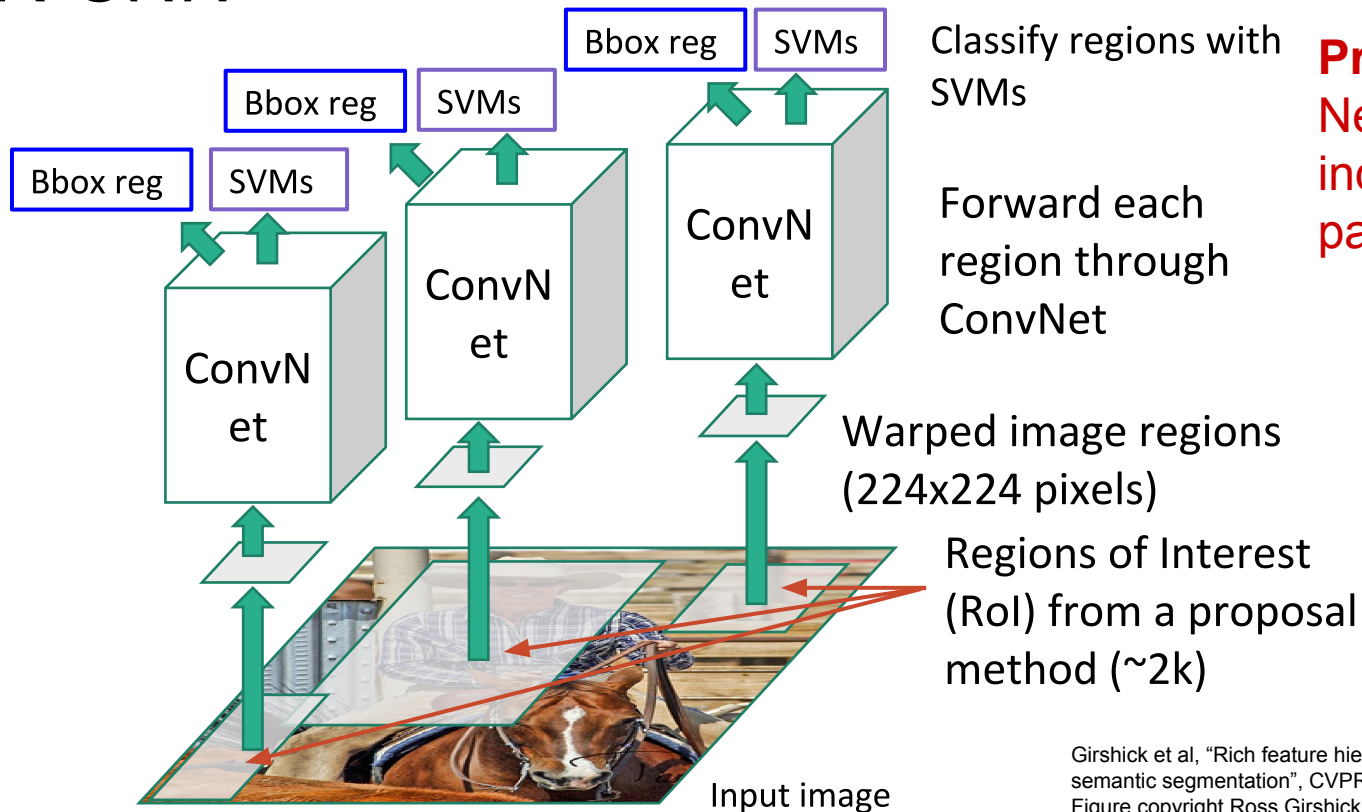
Predict “corrections” to the RoI: 4 numbers: (dx, dy, dw, dh)



Girshick et al, “Rich feature hierarchies for accurate object detection and semantic segmentation”, CVPR 2014.  
Figure copyright Ross Girshick, 2015; [source](#). Reproduced with permission.

# R-CNN

Predict “corrections” to the RoI: 4 numbers: (dx, dy, dw, dh)

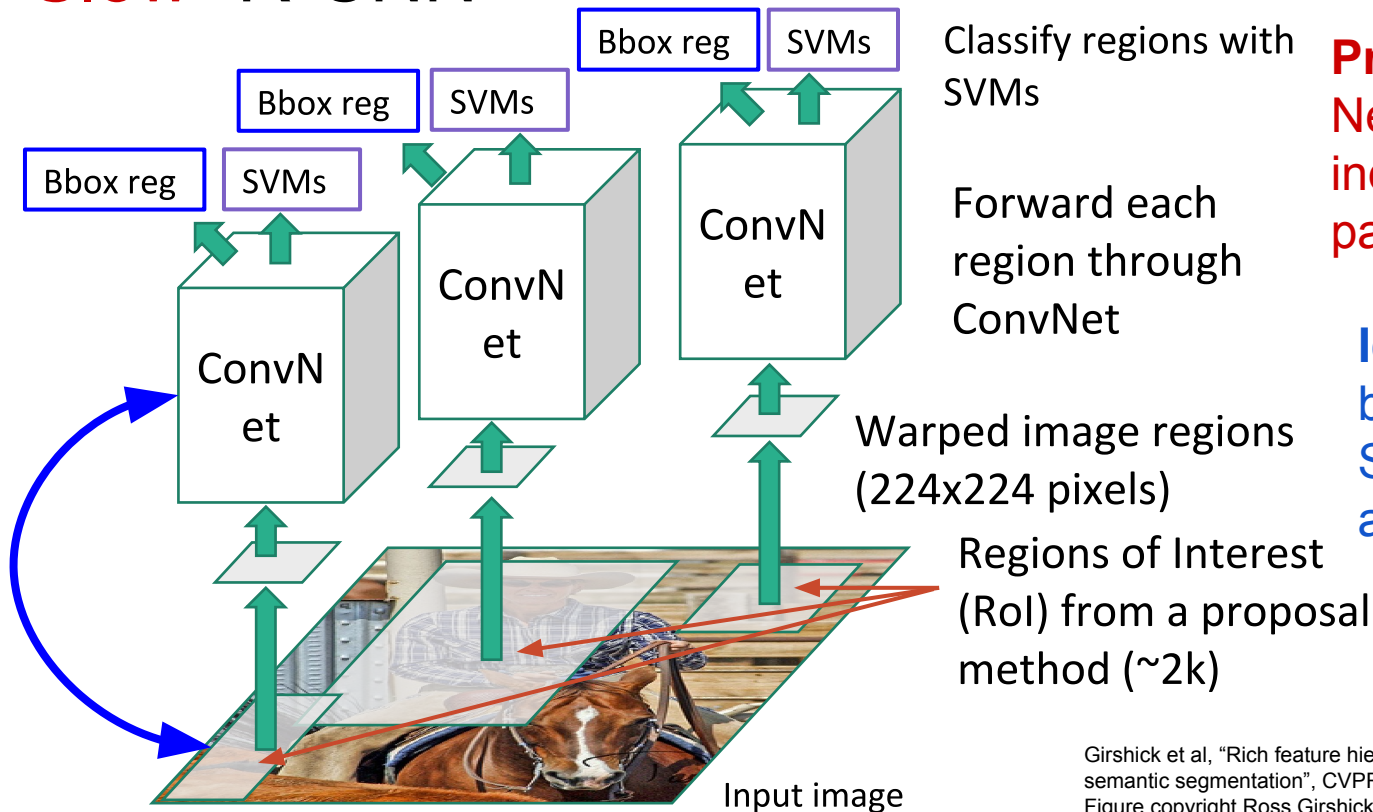


**Problem: Very slow!**  
Need to do ~2k  
independent forward  
passes for each image!

Girshick et al, “Rich feature hierarchies for accurate object detection and semantic segmentation”, CVPR 2014.  
Figure copyright Ross Girshick, 2015; [source](#). Reproduced with permission.

# “Slow” R-CNN

Predict “corrections” to the RoI: 4 numbers: (dx, dy, dw, dh)



**Problem:** Very slow!  
Need to do ~2k  
independent forward  
passes for each image!

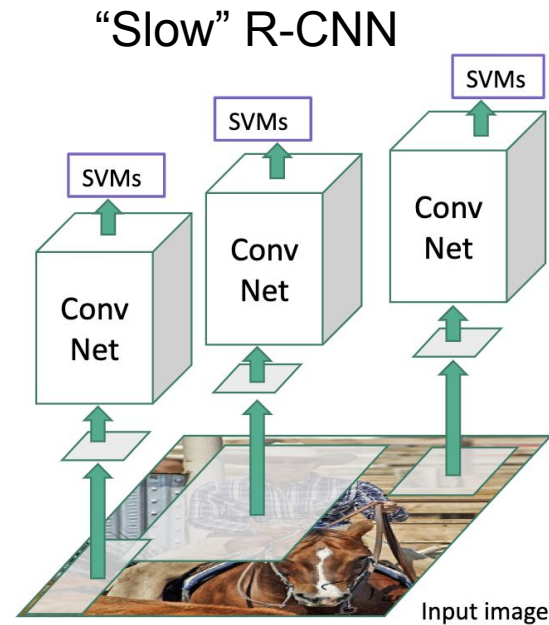
**Idea:** Process image  
before cropping!  
Swap convolution  
and cropping!

Girshick et al, “Rich feature hierarchies for accurate object detection and semantic segmentation”, CVPR 2014.  
Figure copyright Ross Girshick, 2015; [source](#). Reproduced with permission.

# Fast R-CNN

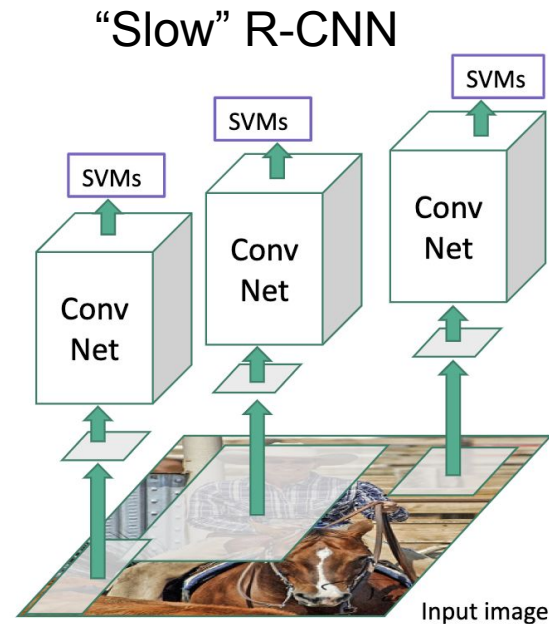
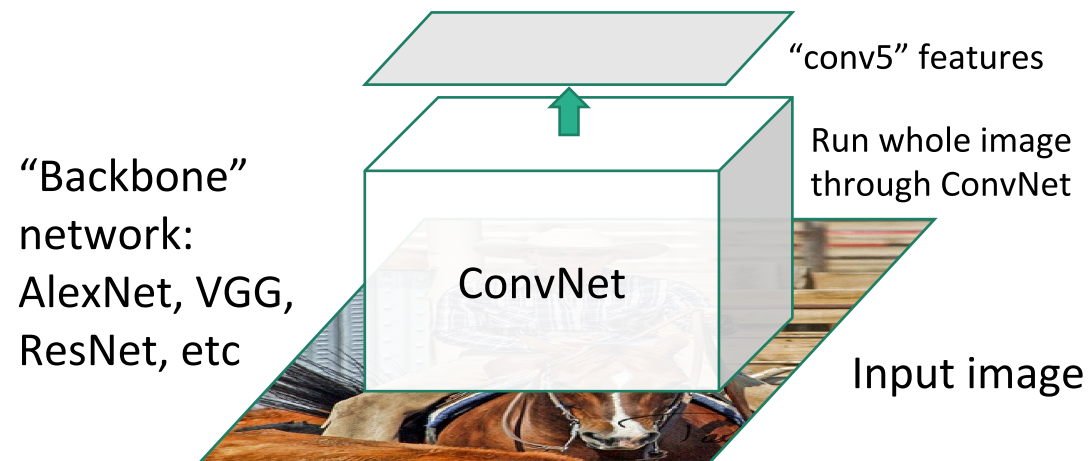


Input image



Girshick, “Fast R-CNN”, ICCV 2015. Figure copyright Ross Girshick, 2015; [source](#). Reproduced with permission.

# Fast R-CNN

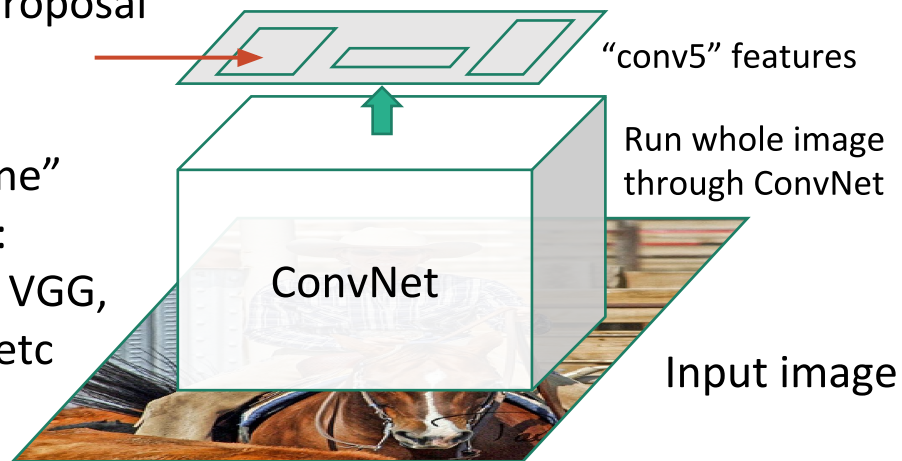


Girshick, “Fast R-CNN”, ICCV 2015. Figure copyright Ross Girshick, 2015; [source](#). Reproduced with permission.

# Fast R-CNN

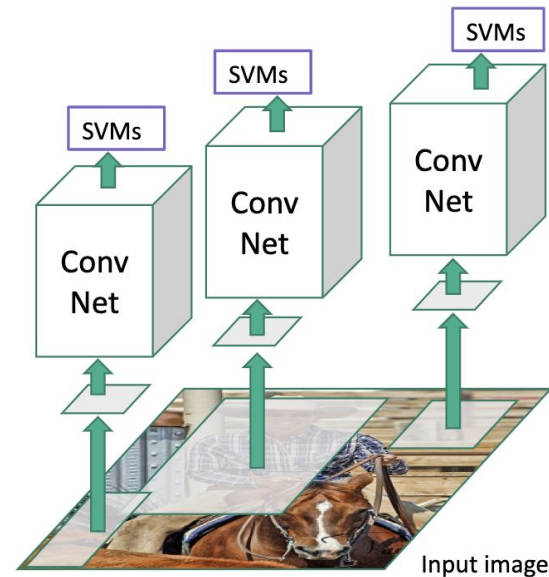
Regions of Interest (RoIs) from a proposal method

“Backbone” network:  
AlexNet, VGG, ResNet, etc



Girshick, “Fast R-CNN”, ICCV 2015. Figure copyright Ross Girshick, 2015; [source](#). Reproduced with permission.

## “Slow” R-CNN

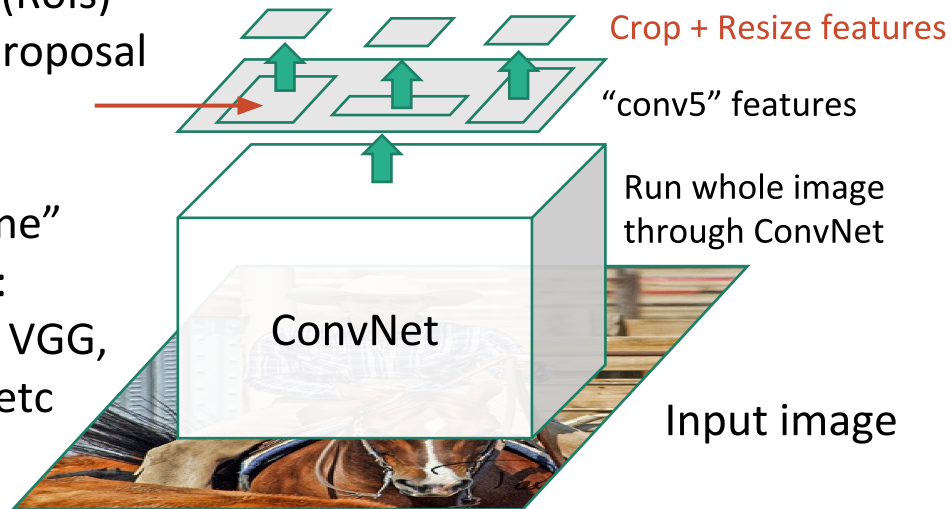




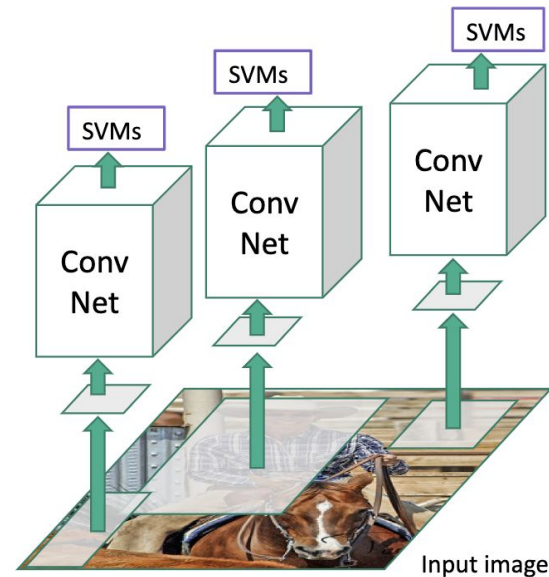
# Fast R-CNN

Regions of Interest (RoIs) from a proposal method

“Backbone” network:  
AlexNet, VGG, ResNet, etc

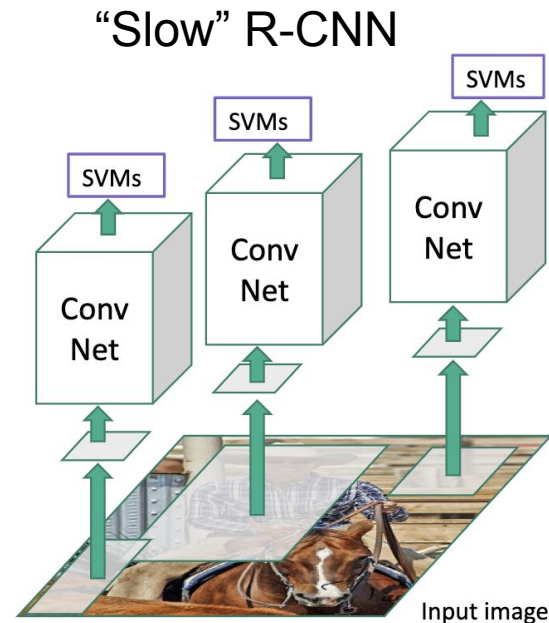
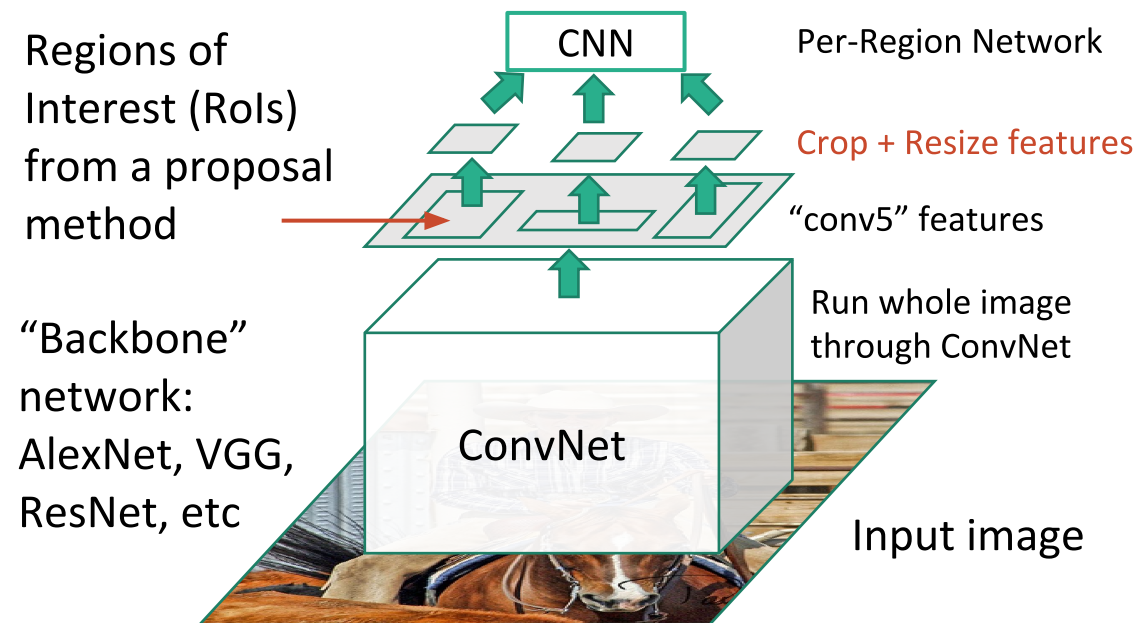


## “Slow” R-CNN



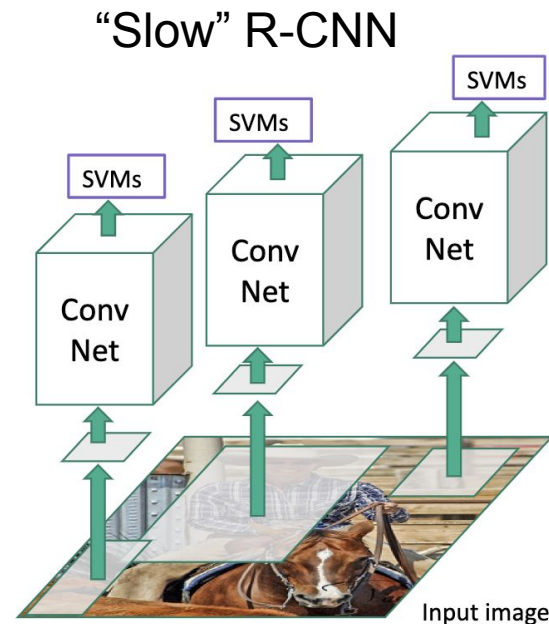
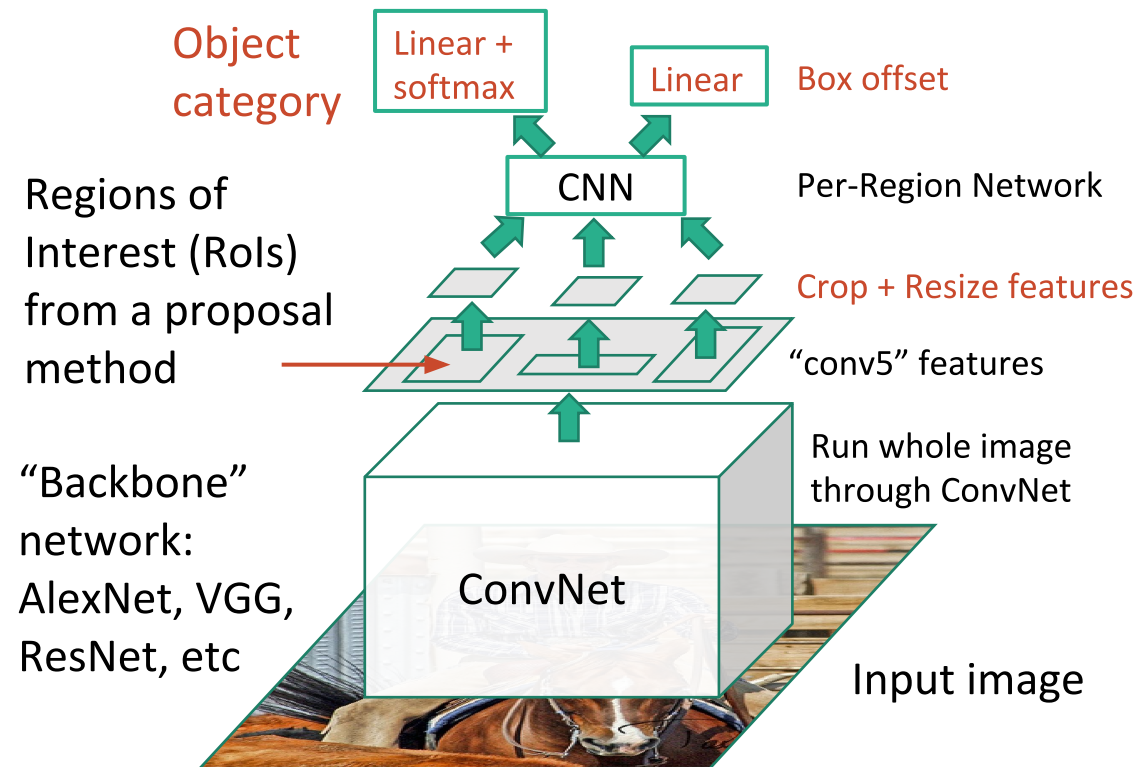
Girshick, “Fast R-CNN”, ICCV 2015. Figure copyright Ross Girshick, 2015; [source](#). Reproduced with permission.

# Fast R-CNN



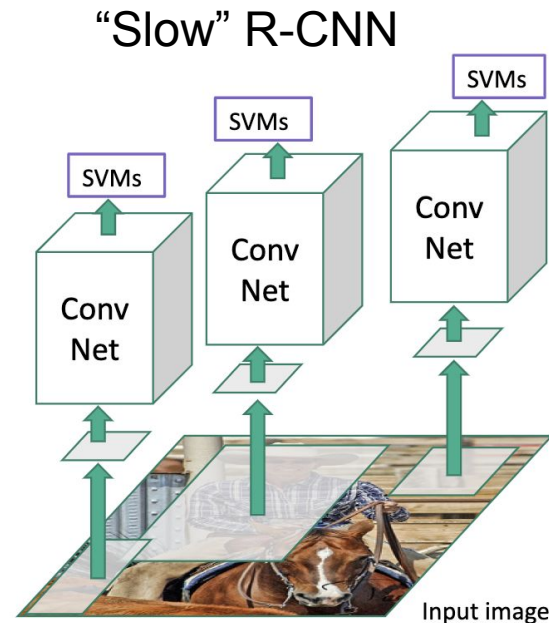
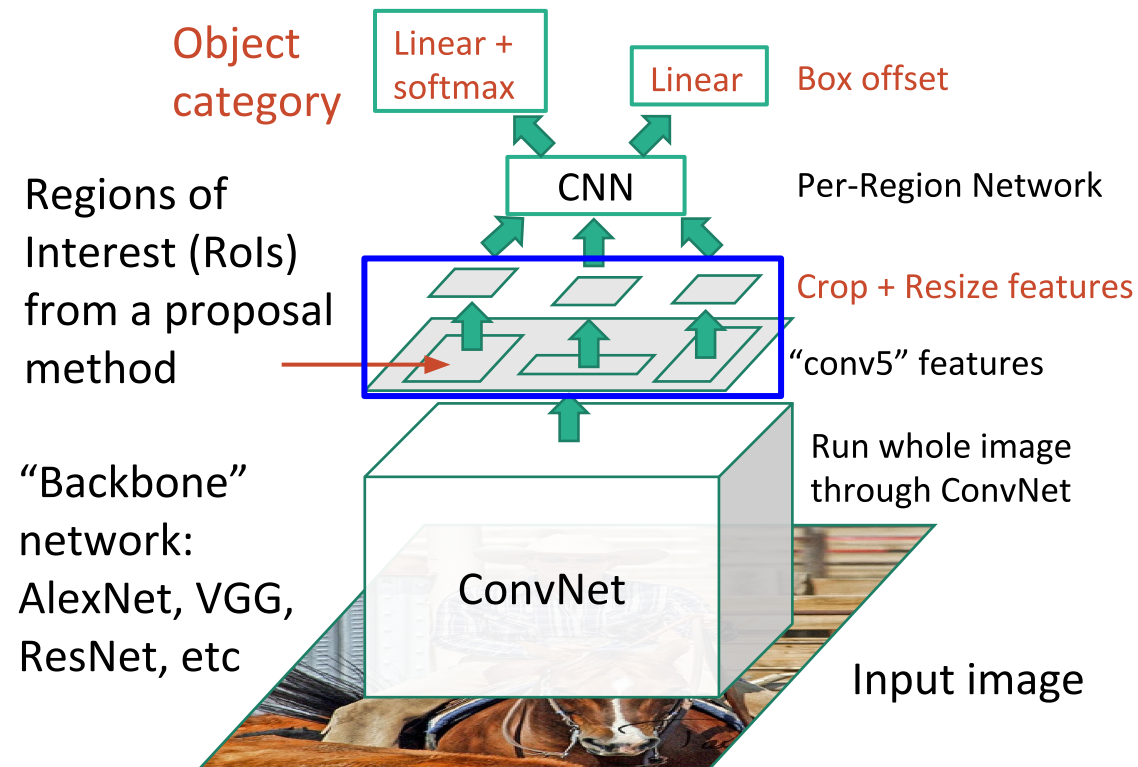
Girshick, “Fast R-CNN”, ICCV 2015. Figure copyright Ross Girshick, 2015; [source](#). Reproduced with permission.

# Fast R-CNN



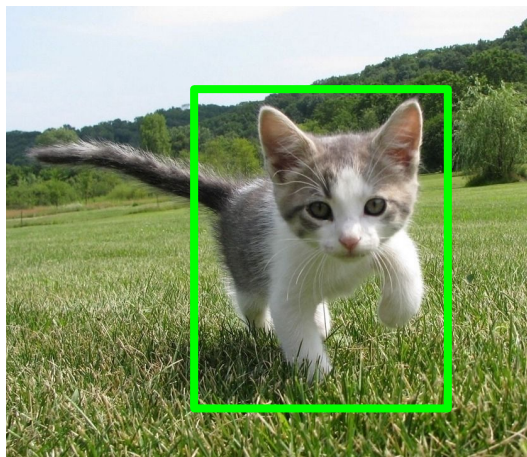
Girshick, "Fast R-CNN", ICCV 2015. Figure copyright Ross Girshick, 2015; [source](#). Reproduced with permission.

# Fast R-CNN



Girshick, "Fast R-CNN", ICCV 2015. Figure copyright Ross Girshick, 2015; [source](#). Reproduced with permission.

# Cropping Features: RoI Pool



Input Image  
(e.g. 3 x 640 x 480)

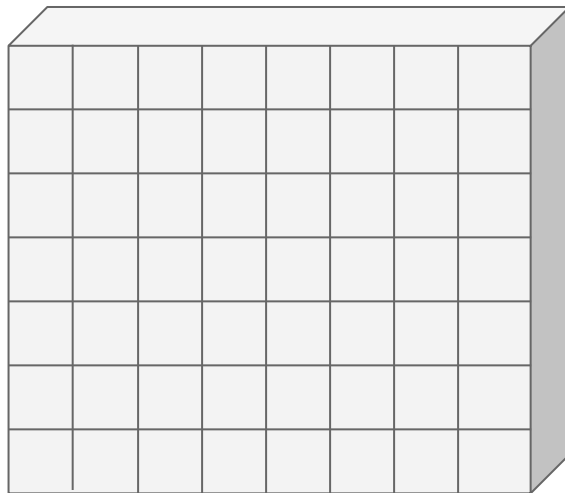
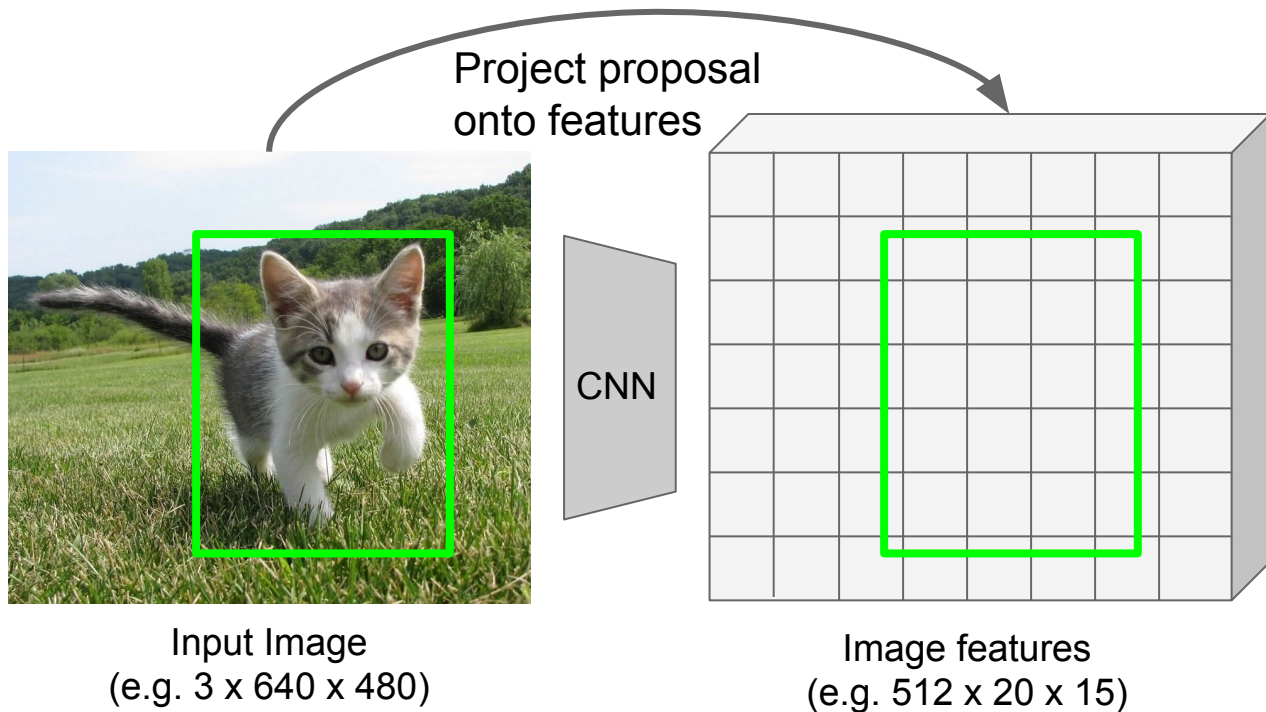
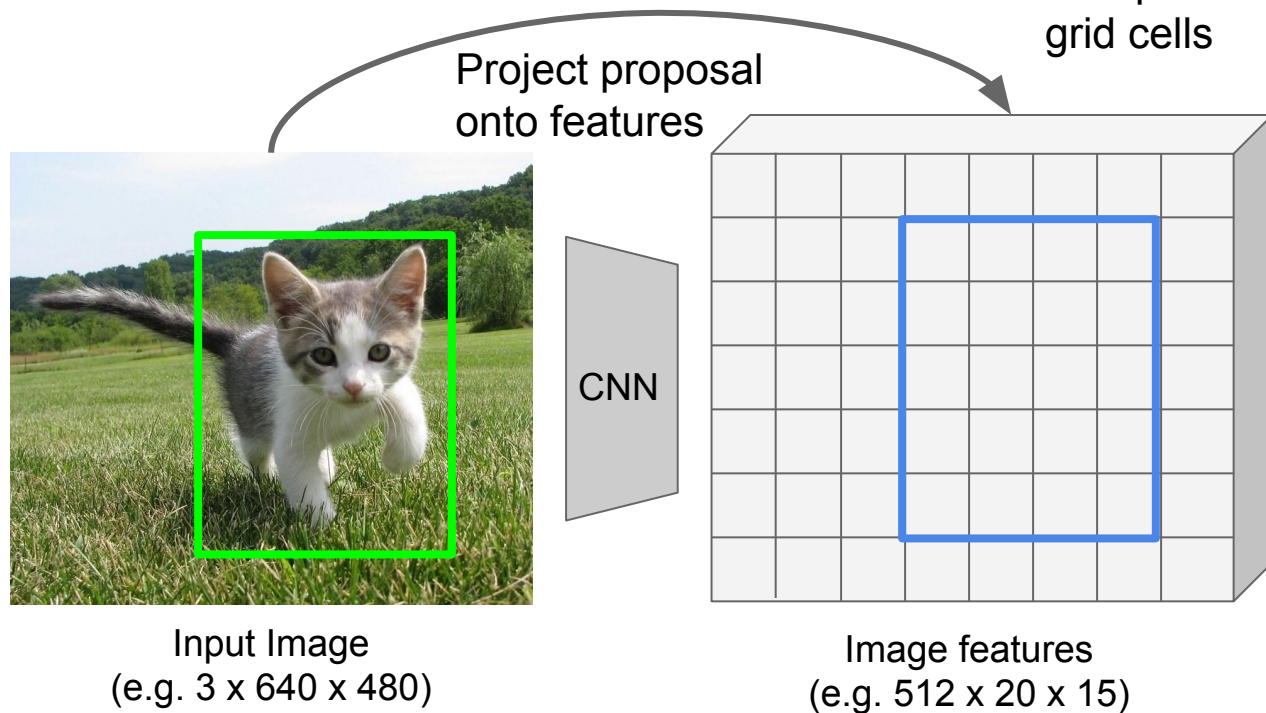


Image features  
(e.g. 512 x 20 x 15)

# Cropping Features: RoI Pool



# Cropping Features: RoI Pool

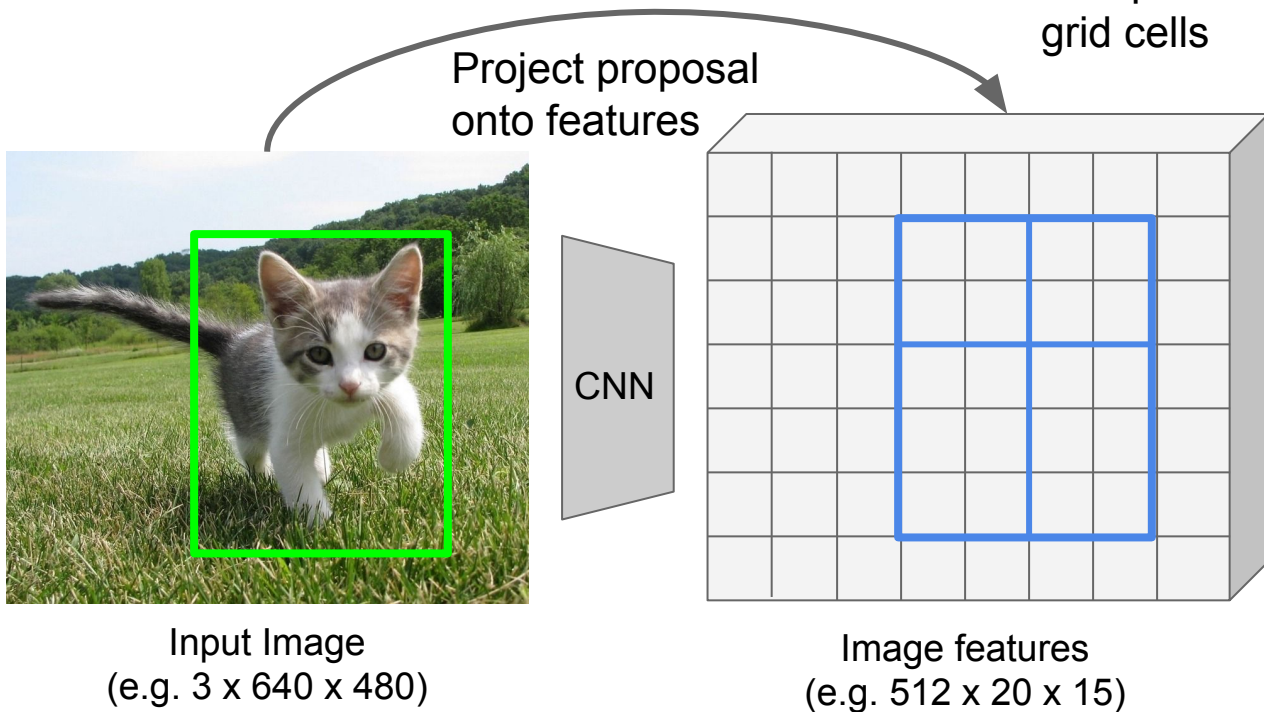




# Cropping Features: RoI Pool

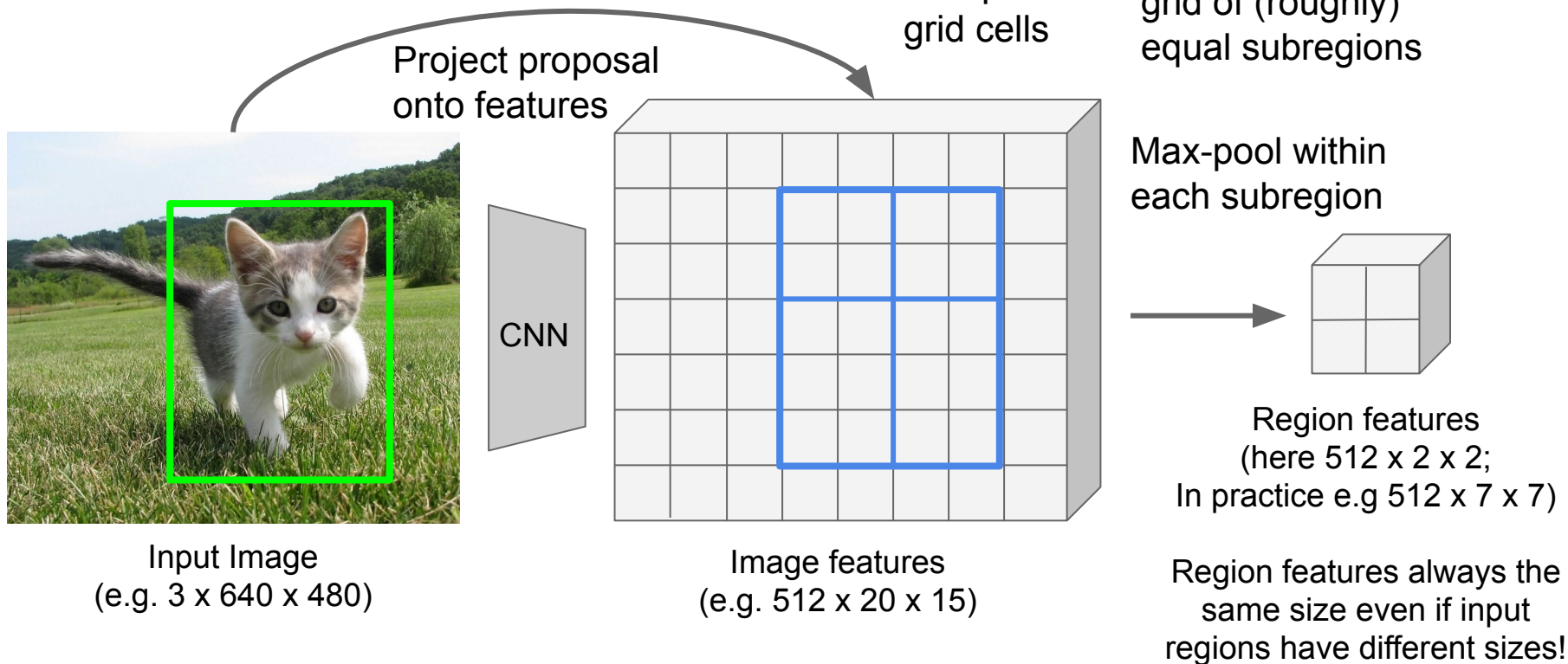
“Snap” to  
grid cells

Divide into 2x2  
grid of (roughly)  
equal subregions



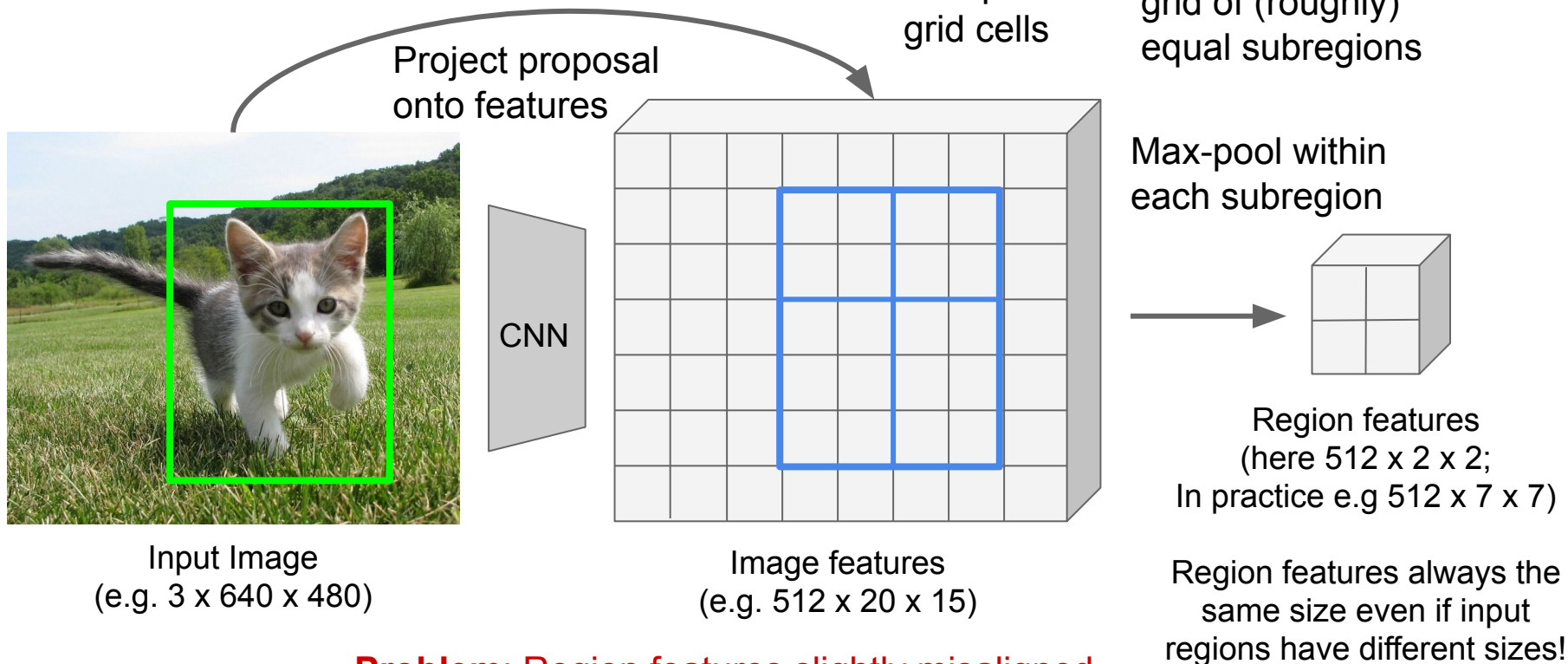


# Cropping Features: RoI Pool



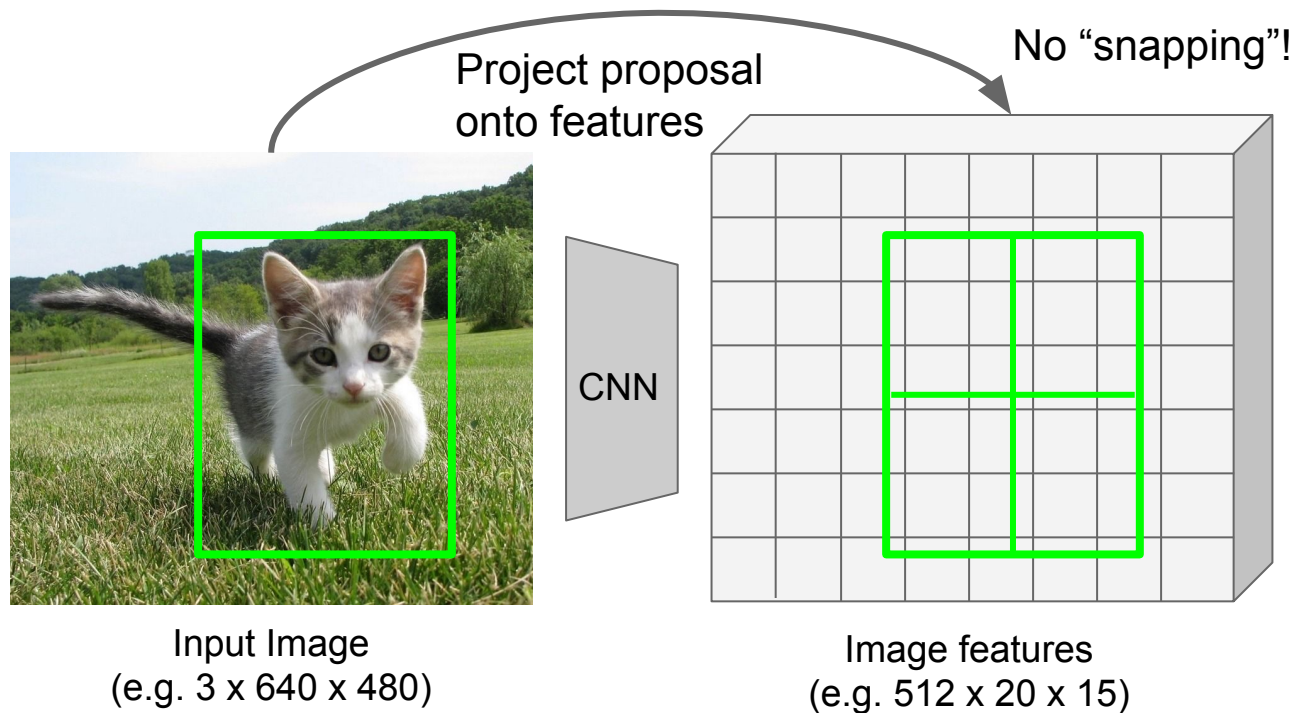
Girshick, "Fast R-CNN", ICCV 2015.

# Cropping Features: RoI Pool



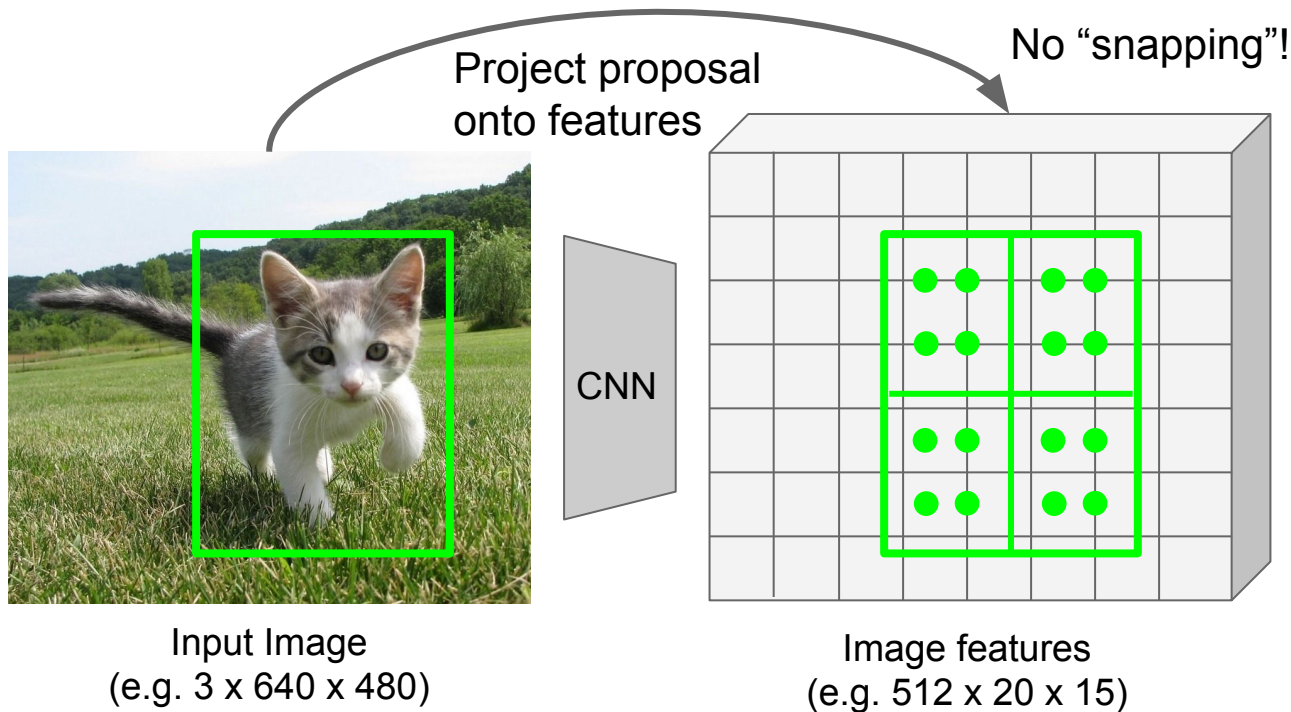
**Problem: Region features slightly misaligned**

# Cropping Features: RoI Align

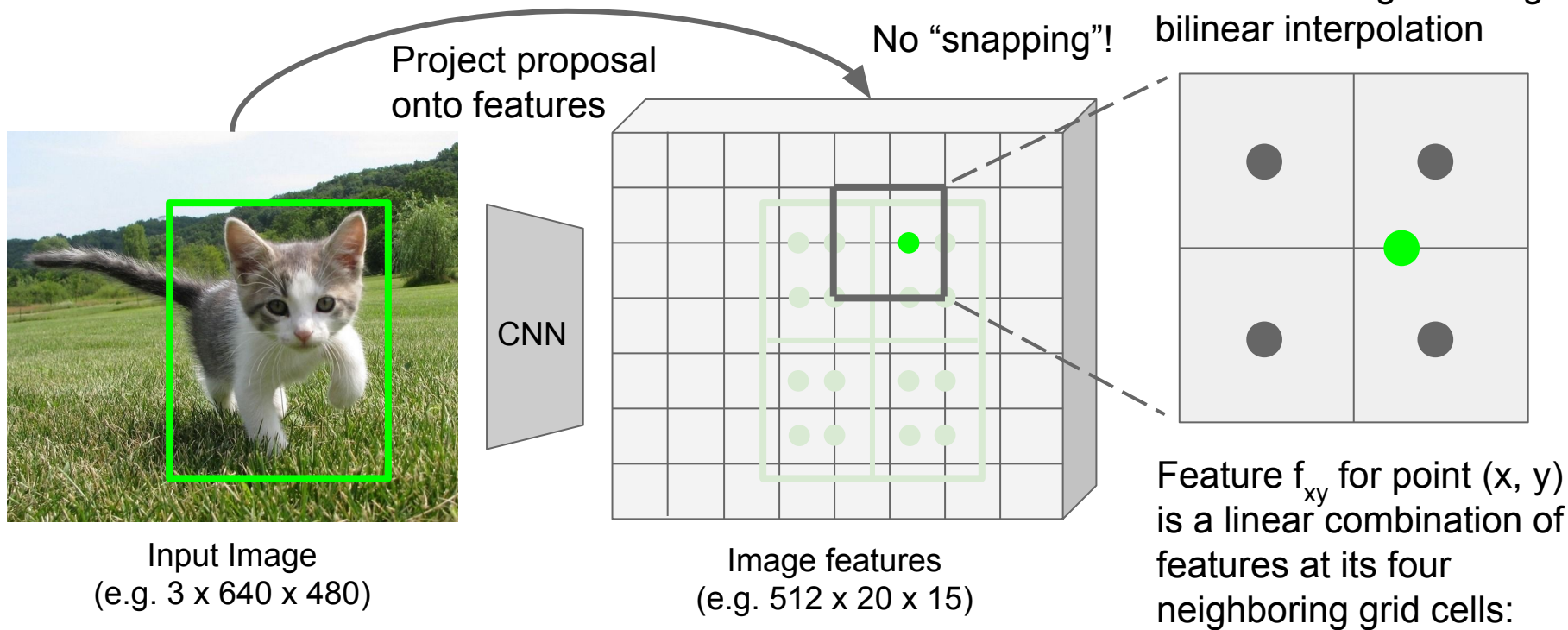


# Cropping Features: RoI Align

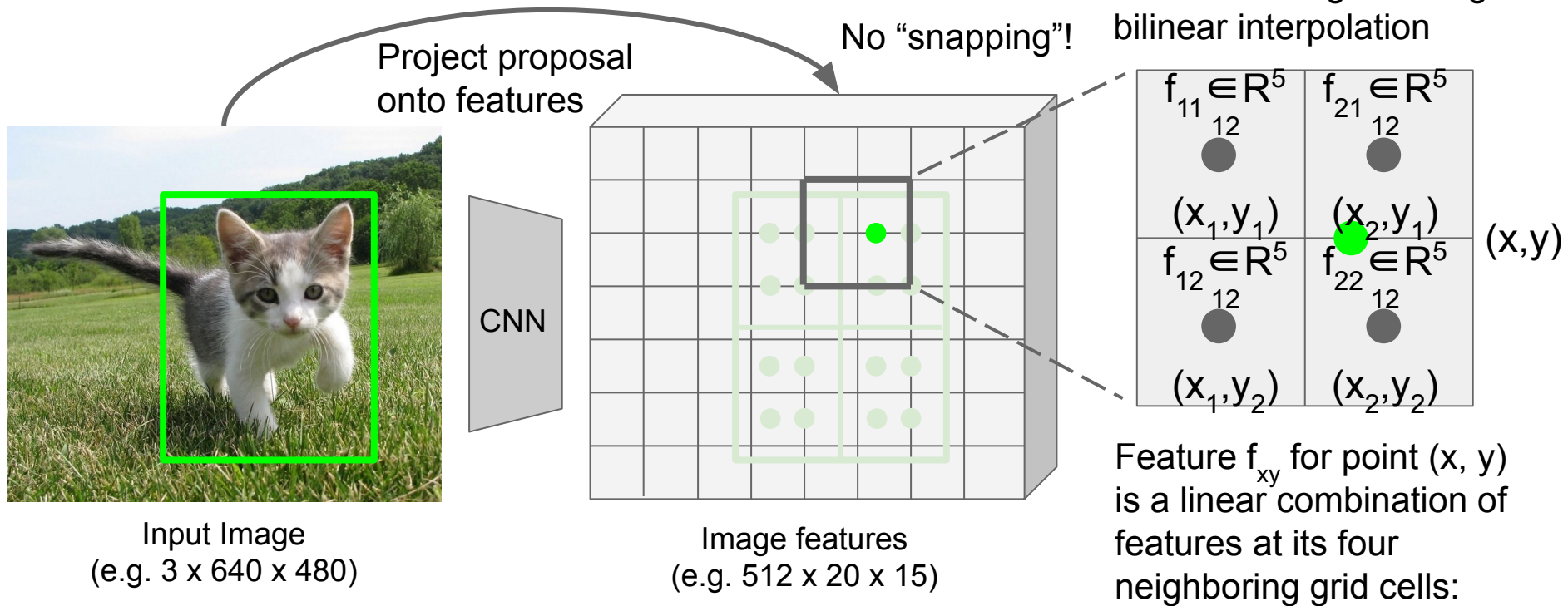
Sample at regular points  
in each subregion using  
bilinear interpolation



# Cropping Features: RoI Align



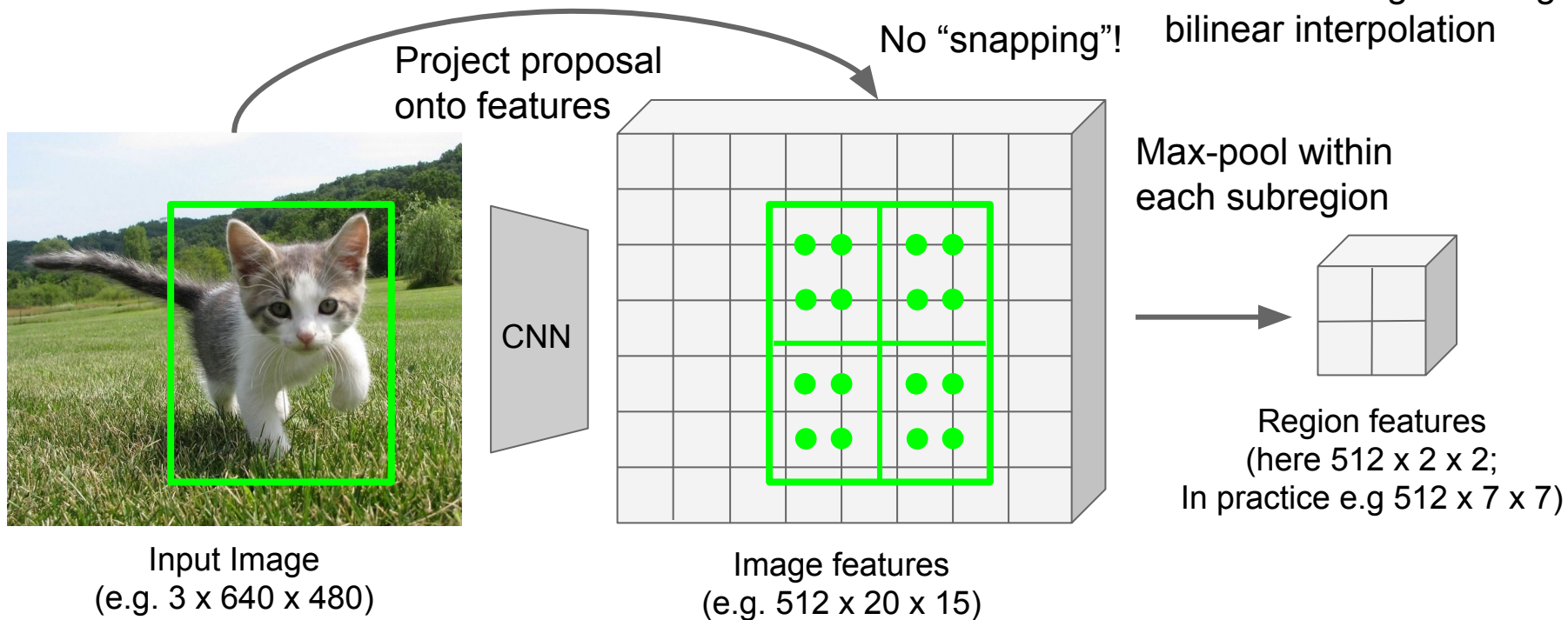
# Cropping Features: RoI Align



$$f_{xy} = \sum_{i,j=1}^2 f_{i,j} \max(0, 1 - |x - x_i|) \max(0, 1 - |y - y_j|)$$

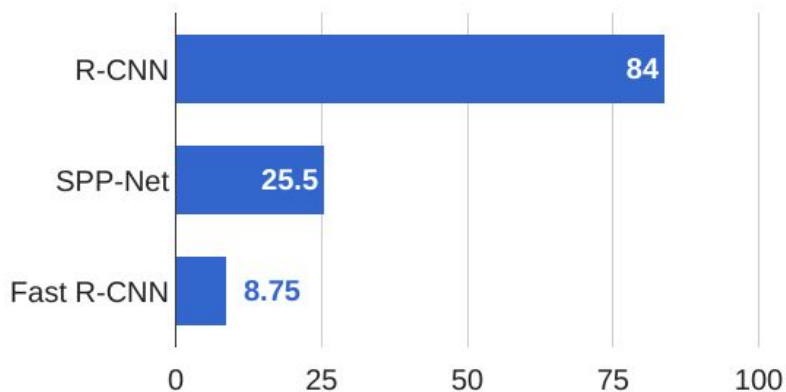


# Cropping Features: RoI Align

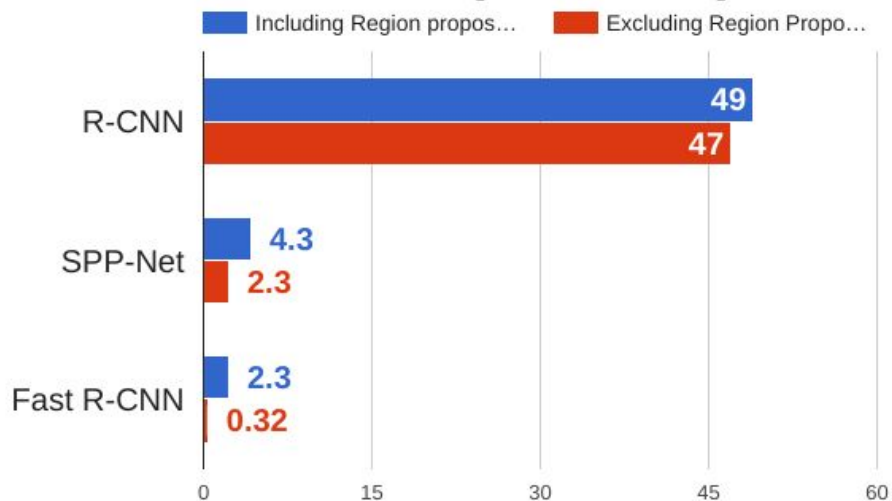


# R-CNN vs Fast R-CNN

## Training time (Hours)



## Test time (seconds)



Girshick et al, "Rich feature hierarchies for accurate object detection and semantic segmentation", CVPR 2014.

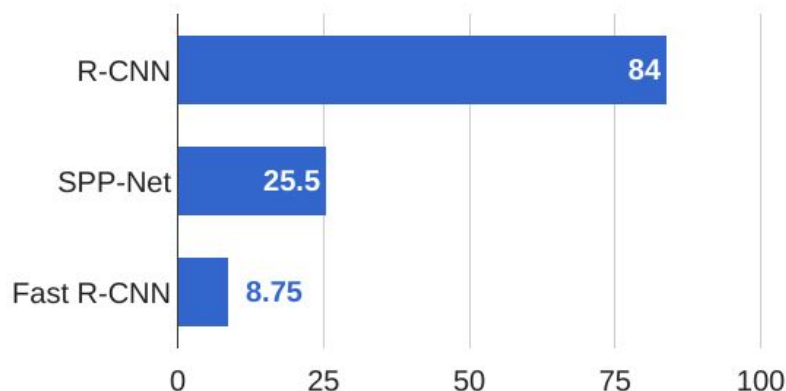
He et al, "Spatial pyramid pooling in deep convolutional networks for visual recognition", ECCV 2014

Girshick, "Fast R-CNN", ICCV 2015

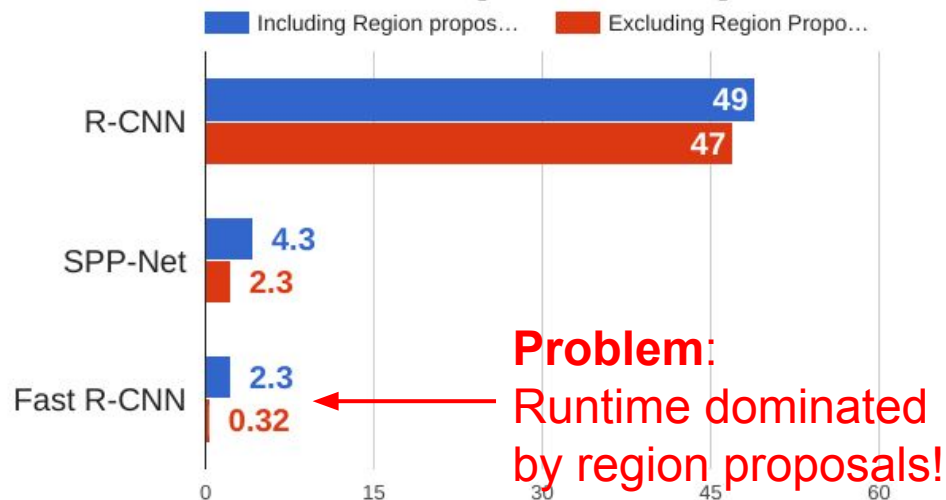


# R-CNN vs Fast R-CNN

## Training time (Hours)



## Test time (seconds)



Girshick et al, "Rich feature hierarchies for accurate object detection and semantic segmentation", CVPR 2014.

He et al, "Spatial pyramid pooling in deep convolutional networks for visual recognition", ECCV 2014

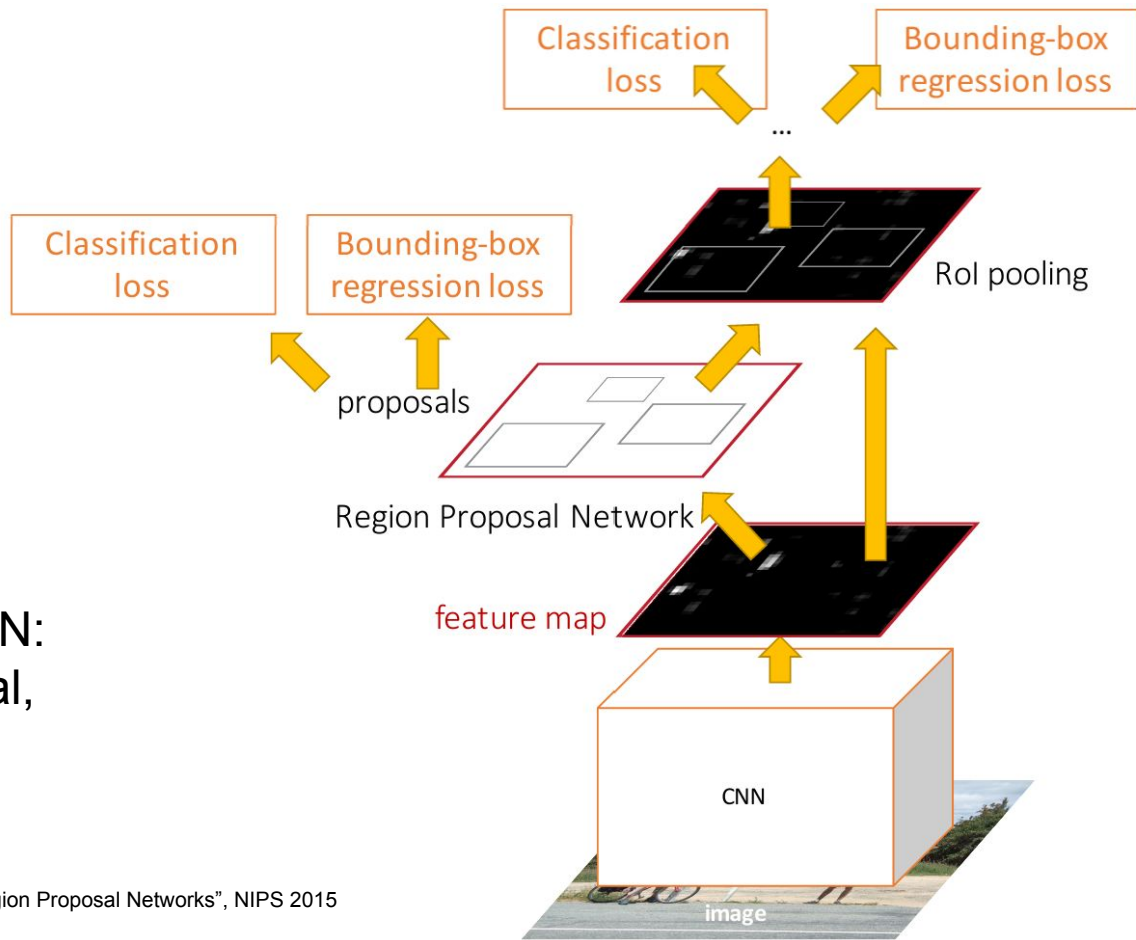
Girshick, "Fast R-CNN", ICCV 2015

# Faster R-CNN:

Make CNN do proposals!

Insert **Region Proposal Network (RPN)** to predict proposals from features

Otherwise same as Fast R-CNN:  
Crop features for each proposal,  
classify each one



Ren et al, "Faster R-CNN: Towards Real-Time Object Detection with Region Proposal Networks", NIPS 2015  
Figure copyright 2015, Ross Girshick; reproduced with permission

# Region Proposal Network



Input Image  
(e.g. 3 x 640 x 480)

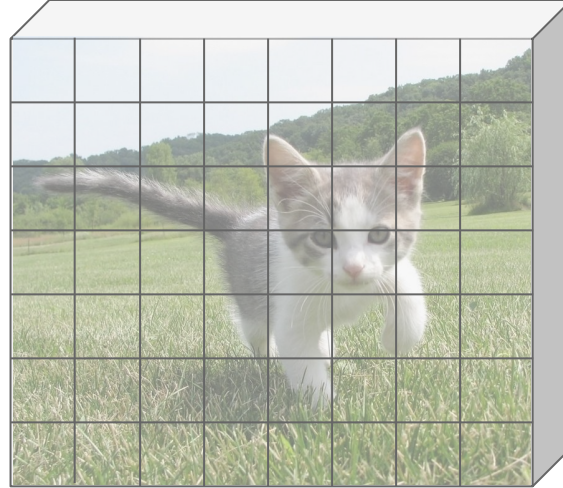


Image features  
(e.g. 512 x 20 x 15)

# Region Proposal Network

Imagine an **anchor box**  
of fixed size at each  
point in the feature map



Input Image  
(e.g. 3 x 640 x 480)

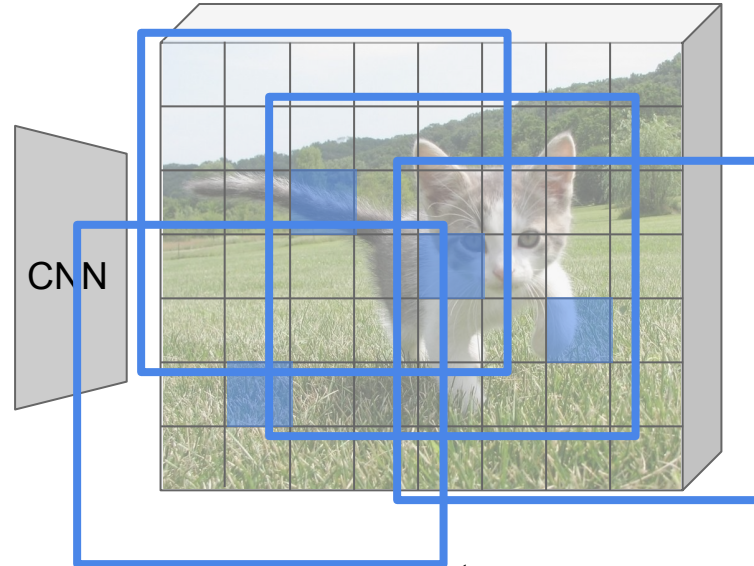
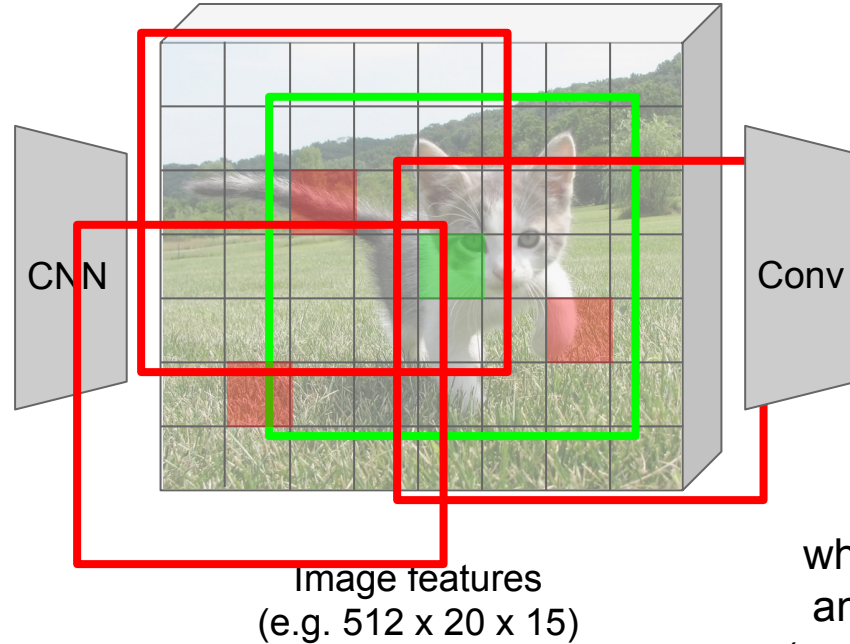


Image features  
(e.g. 512 x 20 x 15)

# Region Proposal Network



Input Image  
(e.g. 3 x 640 x 480)



Imagine an **anchor box**  
of fixed size at each  
point in the feature map

Anchor is an object?  
1 x 20 x 15

At each point, predict  
whether the corresponding  
anchor contains an object  
(per-pixel logistic regression)



# Region Proposal Network



Input Image  
(e.g. 3 x 640 x 480)

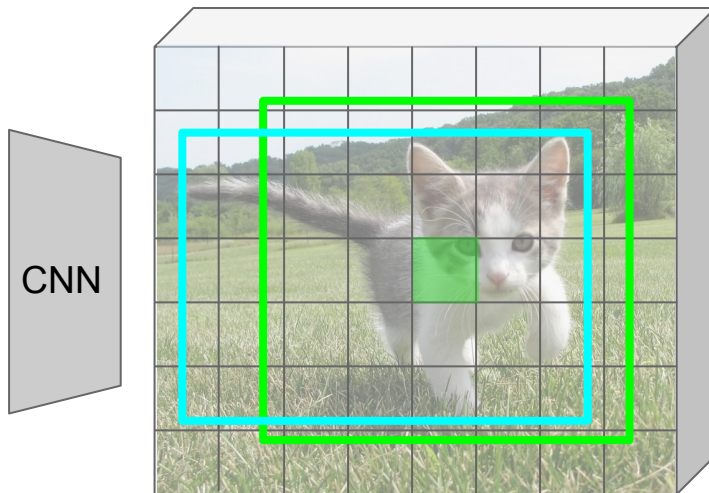


Image features  
(e.g. 512 x 20 x 15)

Imagine an **anchor box**  
of fixed size at each  
point in the feature map



Anchor is an object?  
1 x 20 x 15

Box transforms  
4 x 20 x 15

For positive boxes, also predict  
a transformation from the  
anchor to the ground-truth box  
(regress 4 numbers per pixel)

# Region Proposal Network

In practice use  $K$  different anchor boxes of different size / scale at each point



Input Image  
(e.g.  $3 \times 640 \times 480$ )

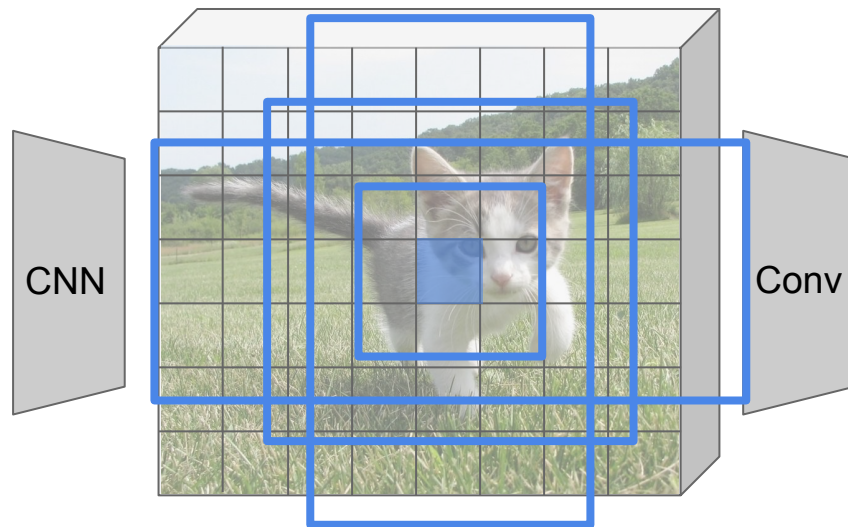


Image features  
(e.g.  $512 \times 20 \times 15$ )

Anchor is an object?  
 $K \times 20 \times 15$

Box transforms  
 $4K \times 20 \times 15$

# Region Proposal Network

In practice use  $K$  different anchor boxes of different size / scale at each point



Input Image  
(e.g.  $3 \times 640 \times 480$ )

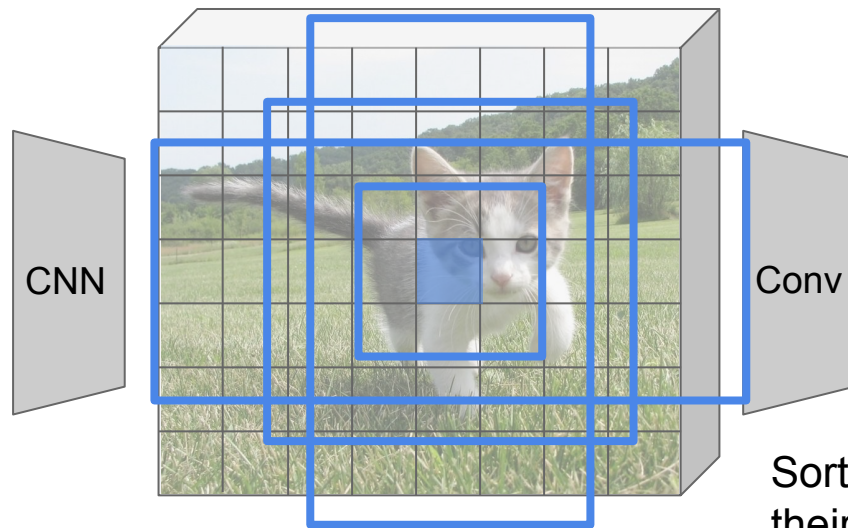


Image features  
(e.g.  $512 \times 20 \times 15$ )

Anchor is an object?  
 $K \times 20 \times 15$

Box transforms  
 $4K \times 20 \times 15$

Sort the  $K \times 20 \times 15$  boxes by their “object” score, take top  $\sim 300$  as our proposals

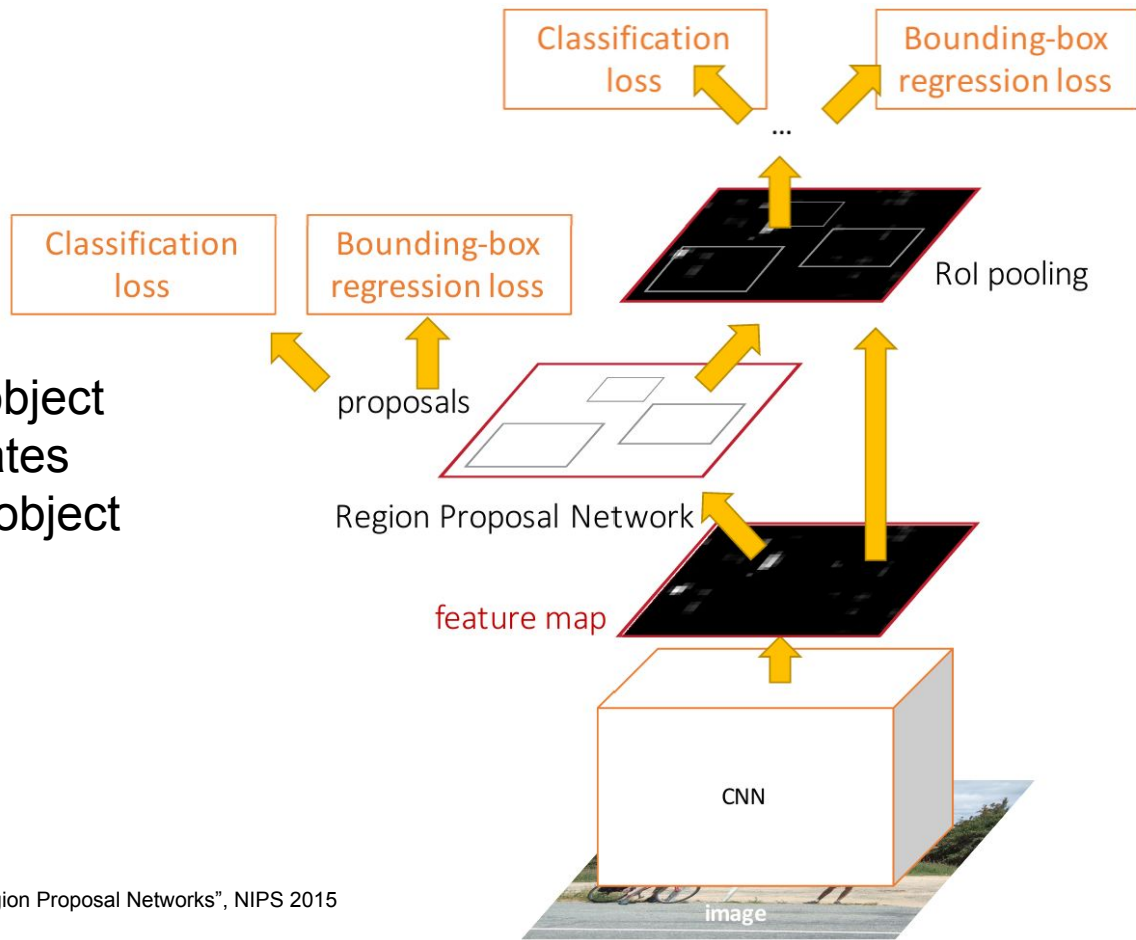


# Faster R-CNN:

Make CNN do proposals!

Jointly train with 4 losses:

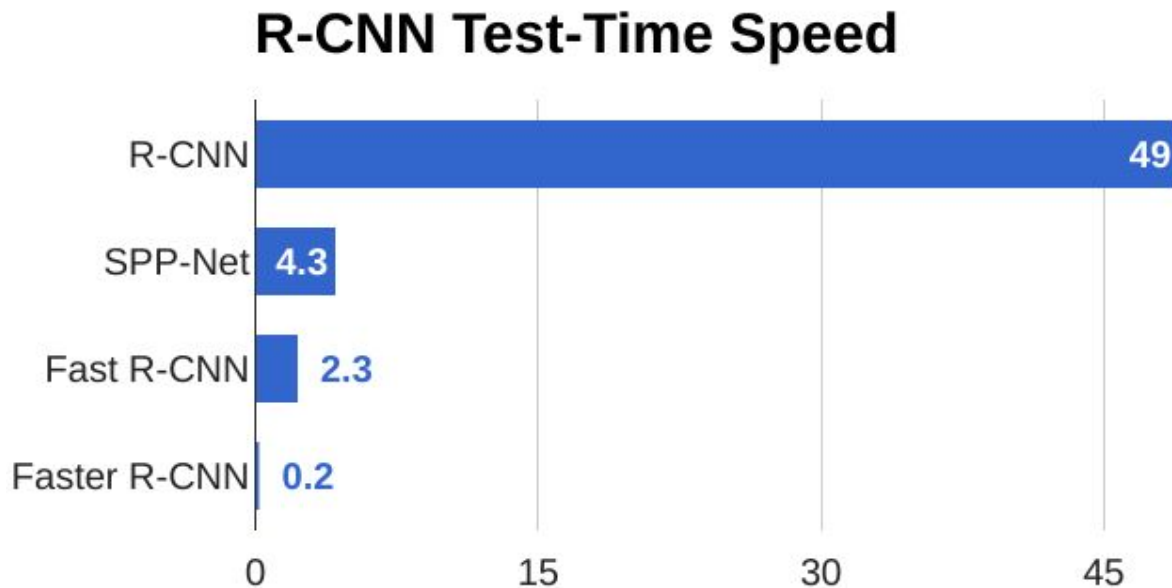
1. RPN classify object / not object
2. RPN regress box coordinates
3. Final classification score (object classes)
4. Final box coordinates



Ren et al, "Faster R-CNN: Towards Real-Time Object Detection with Region Proposal Networks", NIPS 2015  
Figure copyright 2015, Ross Girshick; reproduced with permission

# Faster R-CNN:

Make CNN do proposals!

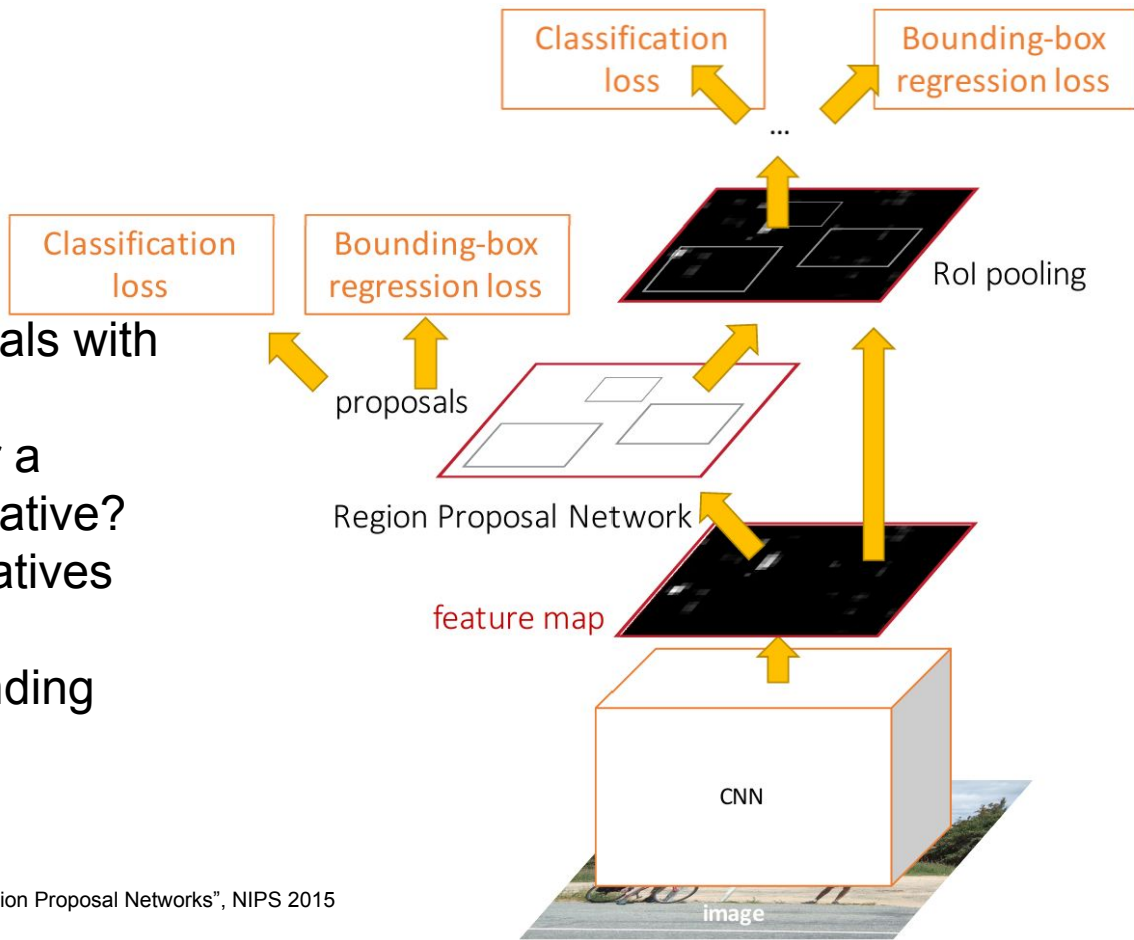


# Faster R-CNN:

Make CNN do proposals!

Glossing over many details:

- Ignore overlapping proposals with **non-max suppression**
- How to determine whether a proposal is positive or negative?
- How many positives / negatives to send to second stage?
- How to parameterize bounding box regression?



Ren et al, "Faster R-CNN: Towards Real-Time Object Detection with Region Proposal Networks", NIPS 2015  
Figure copyright 2015, Ross Girshick; reproduced with permission

# Faster R-CNN:

Make CNN do proposals!

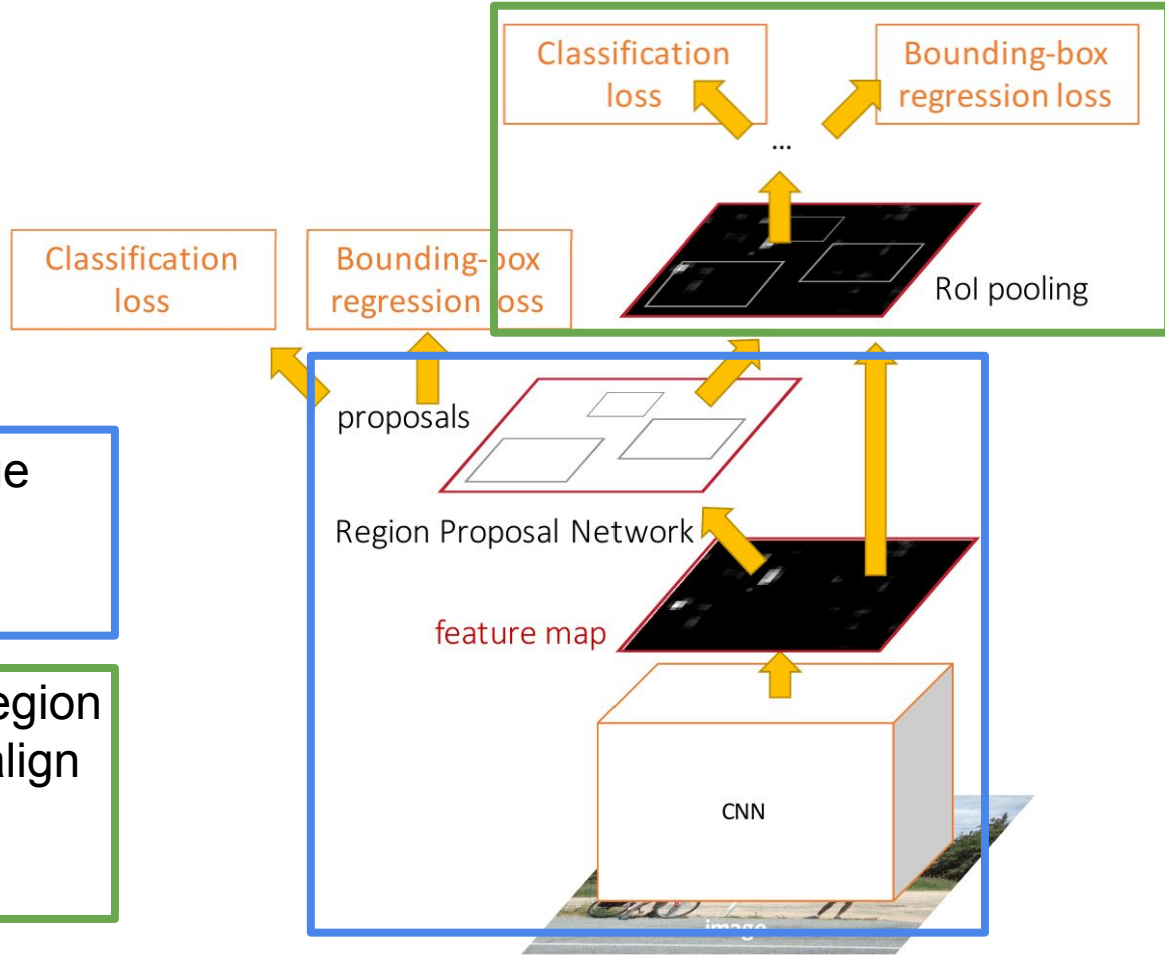
Faster R-CNN is a  
**Two-stage object detector**

First stage: Run once per image

- Backbone network
- Region proposal network

Second stage: Run once per region

- Crop features: RoI pool / align
- Predict object class
- Prediction bbox offset



# Faster R-CNN:

Make CNN do proposals!

Faster R-CNN is a  
**Two-stage object detector**

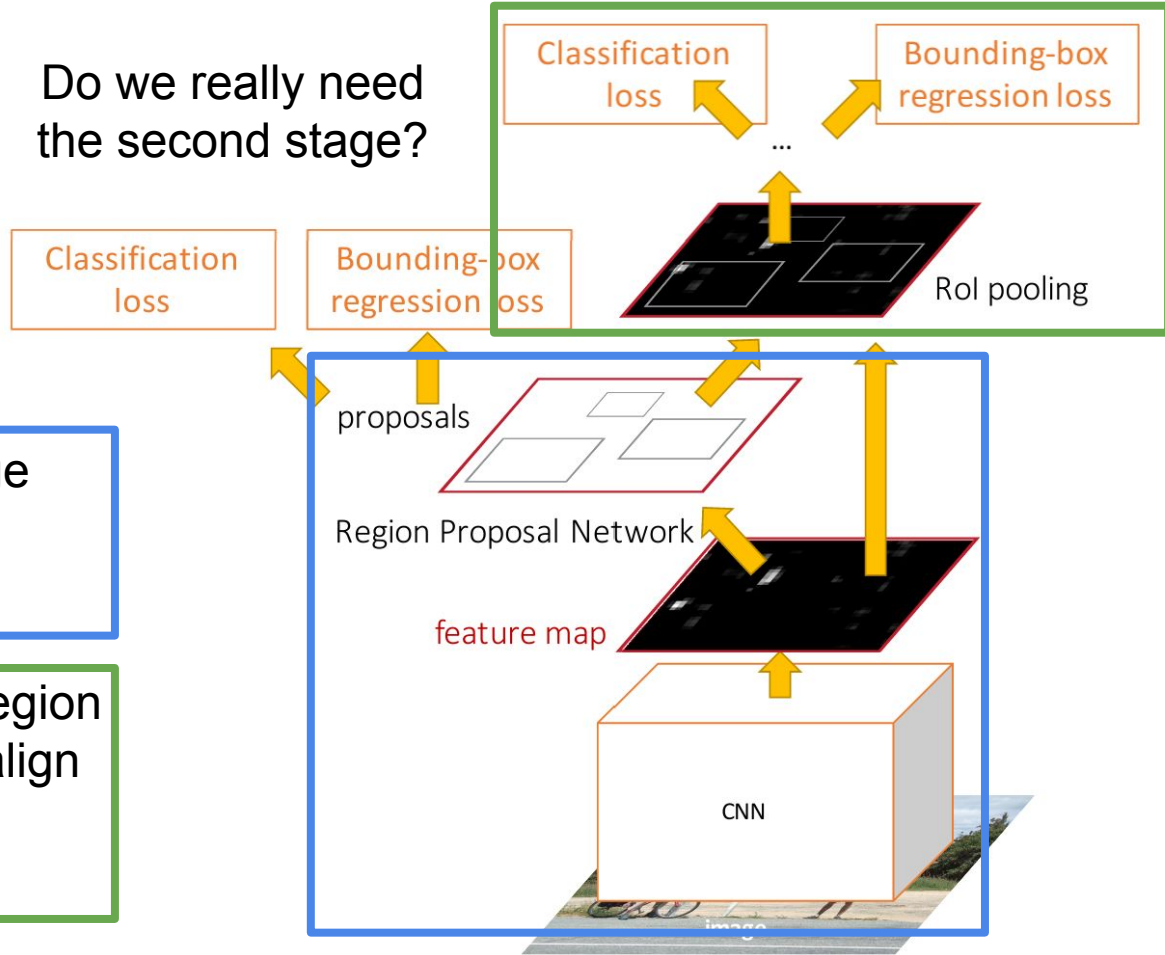
First stage: Run once per image

- Backbone network
- Region proposal network

Second stage: Run once per region

- Crop features: RoI pool / align
- Predict object class
- Prediction bbox offset

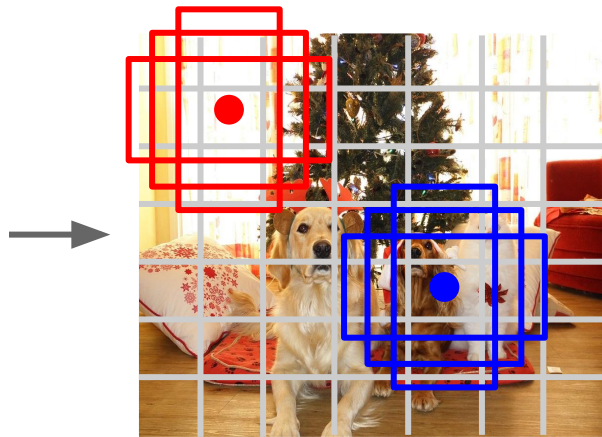
Do we really need  
the second stage?



# Single-Stage Object Detectors: YOLO / SSD / RetinaNet



Input image  
 $3 \times H \times W$



Divide image into grid  
 $7 \times 7$

Image a set of **base boxes**  
centered at each grid cell  
Here  $B = 3$

Within each grid cell:

- Regress from each of the  $B$  base boxes to a final box with 5 numbers:  
( $dx, dy, dh, dw, confidence$ )
- Predict scores for each of  $C$  classes (including background as a class)
- Looks a lot like RPN, but category-specific!

Output:  
 $7 \times 7 \times (5 * B + C)$

Redmon et al, "You Only Look Once:  
Unified, Real-Time Object Detection", CVPR 2016  
Liu et al, "SSD: Single-Shot MultiBox Detector", ECCV 2016  
Lin et al, "Focal Loss for Dense Object Detection", ICCV 2017

# Object Detection: Lots of variables ...

## Backbone Network

VGG16

ResNet-101

Inception V2

Inception V3

Inception

ResNet

MobileNet

## “Meta-Architecture”

Two-stage: Faster R-CNN

Single-stage: YOLO / SSD

Hybrid: R-FCN

## Image Size

## # Region Proposals

...

## Takeaways

Faster R-CNN is slower  
but more accurate

SSD is much faster but  
not as accurate

Bigger / Deeper  
backbones work better

Huang et al, “Speed/accuracy trade-offs for modern convolutional object detectors”, CVPR 2017

R-FCN: Dai et al, “R-FCN: Object Detection via Region-based Fully Convolutional Networks”, NIPS 2016

Inception-V2: Ioffe and Szegedy, “Batch Normalization: Accelerating Deep Network Training by Reducing Internal Covariate Shift”, ICML 2015

Inception V3: Szegedy et al, “Rethinking the Inception Architecture for Computer Vision”, arXiv 2016

Inception ResNet: Szegedy et al, “Inception-V4, Inception-ResNet and the Impact of Residual Connections on Learning”, arXiv 2016

MobileNet: Howard et al, “Efficient Convolutional Neural Networks for Mobile Vision Applications”, arXiv 2017

# Object Detection: Lots of variables ...

## Backbone

### Network

VGG16

ResNet-101

Inception V2

Inception V3

Inception

ResNet

MobileNet

## “Meta-Architecture”

Two-stage: Faster R-CNN

Single-stage: YOLO / SSD

Hybrid: R-FCN

## Image Size

## # Region Proposals

...

## Takeaways

Faster R-CNN is slower  
but more accurate

SSD is much faster but  
not as accurate

Bigger / Deeper  
backbones work better

Huang et al, “Speed/accuracy trade-offs for modern convolutional object detectors”, CVPR 2017

Zou et al, “Object Detection in 20 Years: A Survey”, arXiv 2019 (today!)

R-FCN: Dai et al, “R-FCN: Object Detection via Region-based Fully Convolutional Networks”, NIPS 2016

Inception-V2: Ioffe and Szegedy, “Batch Normalization: Accelerating Deep Network Training by Reducing Internal Covariate Shift”, ICML 2015

Inception V3: Szegedy et al, “Rethinking the Inception Architecture for Computer Vision”, arXiv 2016

Inception ResNet: Szegedy et al, “Inception-V4, Inception-ResNet and the Impact of Residual Connections on Learning”, arXiv 2016

MobileNet: Howard et al, “Efficient Convolutional Neural Networks for Mobile Vision Applications”, arXiv 2017